

WEATHER

	Min.	Max.	Precip.
Wednesday, Nov. 5	51	67	Trace
Thursday, Nov. 6	48	71	0.00
Friday, Nov. 7	57	69	0.06
Saturday, Nov. 8	57	68	Trace
Sunday, Nov. 9	57	70	0.00
Monday, Nov. 10	51	70	0.71
Tuesday, Nov. 11	53	61	0.00

ONE HUNDRED-SIXTH YEAR—No. 22

12 Pages This Week

Plus 4-Page Supplement

CHELSEA, MICHIGAN, THURSDAY, NOVEMBER 13, 1975

15c per copy

SUBSCRIPTION: \$6.00 PER YEAR

The Chelsea Standard

QUOTE

"Knowledge is not knowledge until someone else knows that one knows."
—Lucilius.

Supr. M. Hoffman Resigns Sylvan Post

Elected Supervisor of Sylvan township in 1955, Maurice Hoffman tendered his resignation from the post, effective Dec. 2, to the Township Board last week.

In his letter of resignation, he cited health and personal reasons for resigning the post just less than one year from its termination. His term would have expired next November. The Township Board is expected to name a successor soon.

Hoffman, aged 69, served as a member of the former County Board of Supervisors. In 1958 and 1960 he was an unsuccessful Democratic candidate for state representative.

Mr. Hoffman has been a life-

long resident of Chelsea. He attended Chelsea schools and received his high school diploma from St. Mary's school here. He also attended Eastern Michigan University.

From 1944 to 1949 he was recreational director at Cassidy Lake Technical school. He was employed in a defense plant during World War II and has operated a rug cleaning business.

For the past 10 years, he has served as a court bailiff, including the 14th District court here.

His current position is serving in the courtroom of Circuit Court Judge Patrick J. Conlin in Ann Arbor.

He resides at 115 Pierce St.

'I Remember Mama' Tickets Now On Sale

The Chelsea High School Drama Class will be presenting the play, "I Remember Mama," Nov. 21 and 22 at 8 p.m. in the high school auditorium. Tickets are on sale and may be ordered by phone in the high school office, or purchased during any lunch hour at the high school.

Much of the appeal of "I Remember Mama" is due to the basic reality and humanity of the play's characters, based on the true-life figures in "Mamas Bank Account." When Richard Rodgers and Oscar Hammerstein, II, enjoying with "Oklahoma!" the first fruits of their remarkable partnership, decided to venture into producing plays, they chose van Druten to adapt Miss Forbes' book which they had fallen in love with, as had so many Americans at that time, confident that a writer of this rare imagination and craftsmanship would preserve all the book's warmly human charm in translating it into theatrical terms.

Karen Kern will be seen in the role of the industrious, thrifty Mama, who resourcefully manages on Papa's (Neil Cockerline) small pay envelope to keep her family and household humming and to plan for the fulfillment of their children's dreams.

Katrin, to be played by Judy Powers, eats her heart out for little luxuries like those her more affluent schoolmates have. Nels (Howard Salyer) the only son, longs to become a doctor. (This role incidentally, was originated in New York by Marlon Brando.) Then there are the younger children, Christine and baby Dagmar, to be acted by Penny Kincer and Jenny Bott, who must be spoiled—a little.

Other rich but certainly not wealthy characters in "I Remember Mama" who make its true-to-life story one that reflects the stories of many American families, include a blustering Uncle Chris, whose fuming and fussing cover a really generous heart, to be portrayed by Dennis Petsch. Uncle Chris is the family's scandal, for he is known to live with someone, who is referred to only as "a woman." There are also three aunts, two of them aggressively preferring unneeded advice, the third shyly refraining, is the one who finds romance belatedly at the age of 42. These aunts will be portrayed by Kathleen Treado, Sue Frisbie, and Sue Leach (Sigrid, Jenny, and Trina.)

A team effort by Martha Hahn and DiAnn L'Roy are directing this comedy-drama "I Remember Mama."

Girls Varsity Cagers Lose Two in Past Week

The Chelsea girls basketball team played a tough game on Tuesday, Nov. 4 against a well balanced first place Lincoln team. The Lincoln coach commented "Chelsea's team has the toughest defense we've faced all season." It was a close, hard-fought game although Chelsea lost, 19-28.

High scorer for Chelsea was Karen Keiser with six points. Teresa Breze and Penny Collinsworth shared the honors of four points each. Mickey Bridges marked up three points and Karen Tobin finished out the scoring with two points.

The Chelsea girls varsity basketball team dropped another league game to Novi, 28-43, to give them a 1-6 league record, making them fifth in the league standings.

The girls fell victim to many bad passes giving way to Novi steals. In addition, Novi has several outstanding outside shooters although they seldom could get the ball inside on Chelsea's tough defense.

High scorer for Chelsea was (Continued on page two)

Children's Story Hour Extended 15 Minutes

The Children's Story Hour at McKune Memorial Library held Wednesday mornings has been extended by half an hour. According to head librarian Carolyn Anderson, the hour will run from 10:00 a.m. to 11:00 a.m. Wednesdays. The hour is for children three and four years old.



A SIGN FOR SYLVAN TOWN HALL: According to Sylvan Township Supervisor, Maurice J. Hoffman, the Sylvan Township Hall has never had a sign or identification of any sort. Deciding that the matter was long overdue, the Township Board consulted Jim Daniels about a sign for the building. Last Wednesday at 4 p.m., Daniels, assisted by Byron Smith and George Merkel, erected the half moon sign. According to Daniels the sign is made of five 10-inch white pine boards glued and doweled together. The surface he said is a 'duplication of an old-time method; sprinkling silica sand in black wet paint. It gives a rough finish, but its main purpose is to insure durability. The lettering and design are hand carved and finished in gold paint. How long did it take from design to finish? "About 50 hours," remarked Daniels. Pictured from left: Dan Murphy, township clerk; township trustee George Merkel, Daniels, and Sylvan township treasurer Fred Pearsall.

Chelsea High Athletes Honored At Fall Sports Awards Night

Wednesday evening some 170 Chelsea High school fall athletes, young men and women, their parents and friends, and their respective coaches, gathered for the 1975 Fall Sports Awards held in the Chelsea High school auditorium with a break for dessert and coffee.

As usual a high priority on the list of a fall sportsman is... yes, football. And this year varsity football coach Phil Bareis and his team have something to brag about... a perfect season, a Conference title and a large number of Chelsea names appearing on the All Southwestern Conference team roster.

Receiving special recognition among the varsity gridders were junior Tony Robards, voted most valuable back; voted most valuable lineman, senior Dennis Bauer; voted most improved back, John Collins; most improved linemen, Mark Smyth and Dale Headrick. Team captains will be elected next fall.

Earning top awards for the cross country squad coached by Pat Clarke.

Receiving special recognition in varsity cross country were Phil Frame and Bill Rademacher, voted most valuable runners. Most improved runner went to Mark Buchholz and Bill Rademacher. Captains elected for the '76 season were Phil Frame and Morris Johnson.

In golf coached by Pat Wade, senior Mike Fouty was given the fourth-year award as was Dan Shirilla. Third-year awards went to Roger and Jeff Policht. Senior Don Harmon received a second-

year award. Varsity awards were given to freshman Charles Bridges and sophomore Brian Lewis with junior varsity awards given to sophomores Bruce Rabbit and Joe Ewald. Jeff Rabbit, a freshman, received numerals for his play with the team.

Girls' varsity basketball coach Cheryl Turner reported that the varsity league will not choose

JV Gridders Roll Over Northwest, 26-8

Chelsea High school's J.V. football squad may have marked up another point in their 26-8 defeat of Jackson Northwest had the referees in the game read up on the correct rulings for extra points gained by kicking. Despite that bit of confusion coming in the first quarter of play, the Bulldogs were not harmed, defeating their opponents royally and holding them scoreless until the final minutes of the fourth quarter.

The first touchdown for the Bulldogs came in the opening quarter when Mike Young swept around the end 20 yards. It was Tim Welshans' extra point which hit the upright of the goal post going through, but called bad by referees who later found out they were wrong.

In the second quarter Todd Headrick recovered the ball for Chelsea, marking up a TD following a tackle of Jackson's quarterback by Chuck Broderick. This time Welshans' extra point was good and at the half the Bulldogs found themselves leading, 13-0.

The Bulldogs held their opponents scoreless until the fourth quarter following touchdowns made by Steve Pennington who ran four yards for the six pointer in the third quarter and Randy Harris who went five for a fourth and last TD for the team.

Jackson Northwest was able to mark up their only score in the end of the fourth quarter on an 11-yard pass play and a run for the extra point, giving the team 8 points for the contest.

Defensively Chelsea was led by Matt McCleary with 14 tackles, Vic Verchereau, 12; Rick Risner, 11 and an interception; Todd Weber, seven; Rocky Brandel, five and an interception; Steve Pennington, Steve Dresch, Jamie Bolliger and Bill Van Riper, five tackles each; Jim Stirling, Tom Bareis, Steve Check and Rick Beeman, three each. Beeman also had an interception. Two tackles each wore had by Tim Welshans, Scott Powers, Gary Packard, Todd Headrick, Mike Sweeney and Chuck Broderick. Randy Harris, Mike Young, Mike Hagen, Matt Fisher, Greg Reed, Randy Reinhardt, Phil Steinhauer and Scott Stafford each had one tackle.

Brian Kallshek recovered a fumble. Jeff Powell passed to Broderick on two different plays to (Continued on page three)

most valuable and improved players until their season ends later this month.

In girls JV basketball, Brenda Nugent was selected as the most improved player. "A most valuable player was not selected."

At the junior varsity level in football Jeff Powell, Mike Young and Steve Pennington shared the honors of most valuable offensive back. Powell took the most valuable defensive back award. The most valuable defensive lineman went to Victor Verchereau with most valuable offensive lineman going to Chuck Broderick. Rick Risner and Matt McCleary shared the most improved player award. Coaching the team were Jon Schaffner and Tom Neumeyer.

In freshman football coach Bill Bainton awarded the most valuable player and outstanding back to Greg Reed. Outstanding lineman award went to tackle Scott Powers. Tom Bareis took the award for the best defensive player and the player with the most team spirit. The most improved player went to end Gary Thornton. Bainton remarked that their outstanding players deserving recognition were Joe Vervey, Jeff Biehl and Joe Keiser.

Also awarded were general awards for participation on the various teams. Earning third-year varsity trophy awards for football were Randy Guenther, Dennis Bauer and Rex Miles. Second-year varsity pins went to Dave Watson, Mark Salter, Mark Burnett, Howard Salyer, John Collins, Tim Reed, Eric Prinsing, Jerry Milliken, Dave Schable, Steve Jones, Jim Marshall, Don Sullivan, Joe Sprague, Jim Boyer and David Pletcher.

First-year varsity letters went to John Toon, Anthony Houle, John Adams, Al Dalton, Tony Robards, Bruce Stubbs, Mike Check, Don Nadeau, Scott Owings, Leon Brown, Dale Headrick, Bob Burgess, Mark George Menge, Bob Burgess, Mark Smyth, John Push, Bill Esch, Mark Brennan, Kevin Kelly and Howard Bush.

Managers for varsity football went to Mike Bareis and Todd Sprague. Trainer awards were given to Jeff Kiel, Dennis Petsch and Rick Brandel.

(Continued on page six)

Hockey Team Defeated in Opening Game

Chelsea High Schoolers hockey team suffered defeat in their opening game Sunday, Nov. 9 against Hanover-Horton, 7-1.

The lopsided score indicated to Coach Jerry Ringe that much work needs to be done to improve the team for the long season ahead. Even in defeat, Coach Ringe and the team felt the many fans at the game, supported the team enthusiastically and will continue to do so.

"This support will go a long way (Continued on page two)

Bulldog Gridders Beat Northwest for Perfect 8-0 Season

The Chelsea Bulldogs ended a perfect season last Friday evening defeating Jackson Northwest, 21-14. Northwest is the champion of the Jackson Cascades Conference with a record of 7 and 0. Their only loss before Friday was a 20 to 6 loss to class A Jackson.

Senior halfback Tim Reed opened the scoring with a 13-yard cross back run behind the trap blocks of Mark Smyth and Joel Sprague. This 40-yard drive culminated in a big play with a pass from senior quarterback Randy Guenther to Reed covering 23 yards.

Jackson Northwest, taking advantage of Chelsea mistakes, a pass interception, and a major penalty, moved in on Chelsea's defense. The Mounties scored and then missed the extra point. Chelsea led, 7 to 6.

But Northwest on the next series found some offense and moved 50 yards to score and then converted the two points P.A.T. Northwest led at half-time, 14 to 7.

The second-half belonged to the Bulldogs as they came out running behind the blocking of seniors Jim Marshall, Don Sullivan, Dennis Bauer and Dave Pletcher.

Their one drive fell short due to a penalty and a field goal attempt fell short, but the defense held Northwest and forced a punt. Chelsea took over at mid-field and for the first time this year went unbalanced left, catching Northwest by surprise. Howard Salyer, on a second man through play, raced untouched 43 yards for the touchdown. Rex Miles kicked the extra point and the score was tied, 14 to 14.

The fourth quarter started with Chelsea facing a tough team in addition to a stiff breeze. The

Bulldogs were deep in their own territory and forced to punt. Jim Marshall punted the ball to mid-field; the ball rolled up to a Mountie and then bounced up hitting the Northwest player. Chelsea's line senior split end Dave Pletcher recovered the ball at mid-field.

Tony Robards, a good junior runner, broke over right tackle and with tremendous desire, sprinted 52 yards, breaking three open field tackles, all the way to the three-yard line. Again the Mounties stiffened, but on a 4th and one Tony dove off-tackle for the winning TD.

The game was far from being over, with three minutes remaining on the clock. Northwest had the ball at mid-field.

Up to now the Bulldog defense had completely shut off Northwest offense, holding them to 30 yards in the second half and allowing only one completion by the pass.

This defense consisted of middle guard Jerry Milliken, tackles Leon Brown, tackle Rex Miles, ends Jim Boyer and Joel Sprague, linebackers Dennis Bauer, Tim Reed

and John Collins, halfbacks. Mark Burnett, Howard Salyer and Randy Guenther.

With the game only 59 seconds from the finish, Northwest had a 4th and 6 on the Chelsea 26-yard line. Chelsea fired both linebacker and Tim Reed made a diving tackle of the quarterback, ending Northwest's last hope for victory.

Tony Robards gained 114 yards on the ground, followed by Howard Salyer with 82 yards and Tim Reed with 43. Randy Guenther gained three yards on the ground and 23 passing yards for the Bulldogs.

Dennis Bauer marked up 17 tackles; Mark Burnett, eight; Jerry Milliken, seven; Don Sullivan, six; Leon Brown, Tim Reed and Rex Miles, five; Jim Marshall and Joel Sprague, four; Howard Salyer, John Collins and Randy Guenther, three.

Members of the football team were among all fall sport participants honored Wednesday evening at the Fall Sports Awards program.

Beach Gridders Turn in Fine 5-1 Season Record

The Beach Middle school varsity football team closed out their season Tuesday, Nov. 4 with a hard fought for 12-6 victory over Lincoln; a team which was previously unbeaten. The victory gave the Middle school squad a '75 season record of five and one.

According to the team's coach, Bert Kruse, "this is the 11th consecutive winning season" for the team. Kruse continued, "during this 11-year span, the Middle school squads have piled up a record of 48 wins and seven losses."

This year the squad opened with impressive wins over Novi and Brighton by scores of 42-12 and 40-0. The Bulldogs' only loss came in the third game, an 8-6 win by Mifan. "In this game, the varsity came up quite flat and had difficulty moving the ball against only an average Milan team," Kruse said.

Following the loss to Milan, the Bulldogs turned in victories of 18-6 over Dexter, 20-6 over Saine and the final 12-6 over Lincoln.

According to Kruse, a lot of emphasis was put on defeating Lincoln. Apparently the Lincoln team had won five games, all victories, with wide margins. "This was reputed to be one of their best junior high teams ever," Kruse remarked. Despite it all, the gridders were fired up and played an intense game, refusing to allow Lincoln's quick backs to break away. Bob Ball scored both of the Chelsea touchdowns and made some very important tackles on defense.

The middle school gridders also came up with numerous other key plays to prove that they were capable of rising to the occasion. Big plays are extremely important to a team in closely fought games.

In total the Middle school outscored their opponents, 138-38. Leading the scorers was Bob Ball with six touchdowns. Carl Simpson, the only 7th grader with his name on the roster, marked up five touchdowns for the team as did Shawn Murphy. Mike Wood scored two touchdowns in the Bulldogs' opening game with Novi.

John LaBarbara recovered a fumble in the end zone against Dexter and Dan McGinn, who caught a touchdown pass in the Brighton game, each marked up a TD.

Players who started or who saw considerable action this season are as follows. On the offensive team Mike Killelea, Mike Wood and Don Schrotenboer at the ends, John LaBarbara the leading offensive player on the line and Ken Heller and Louis Jahneke at the tackles. David Morris started as one offensive guard; Dan Koller and Dan Rowe shared the other guard spot. Steve Cobb handled the center spot for all six games. John Dunn, who completed better than 50 percent of his passes, including four touchdown throws, was the quarterback.

Bob Ball, hampered by knee problems and a muscle pull missed parts of three games, but nonetheless the team's leading rusher (Continued on page three)



HONORING VETERANS on Nov. 11, Mrs. American Legion Post 31, place a wreath on the Civil War soldiers monument at Oak Grove Cemetery. Standing in the rear, from left, Kiwanis Club president Julius Blaess, new member sponsors Wallace Wood, immediate past president, Sam Johnson and Paul Schable.



NEW KIWANIS: Three men were initiated in Chelsea Kiwanis Club membership Monday evening at the club's regular meeting. Standing front, from left, Don Wood, village trustee and systems analyst for St. Joseph Mercy Hospital; the Rev. Ralph J. Ratzlaff, pastor of St. Paul United Church

Established 1871 **The Chelsea Standard** Telephone 475-1371
 Excellence Award By Michigan Press Association
 1951-1952-1960-1964-1965-1966
 Walter P. Leonard, Editor and Publisher

Published every Thursday morning at 300 North Main Street, Chelsea, Mich. 48118, and second class postage paid at Chelsea, Mich., under the Act of March 3, 1879.

Subscription Rates (Payable in Advance)
 In Michigan: One Year \$6.00, Six Months \$3.50, Single Copies \$.20
 Outside Michigan: One Year \$8.50, Six Months \$4.50, Single Copies \$.25

MEMBER **NATIONAL NEWSPAPER** Association - Founded 1885
 National Advertising Representative: MICHIGAN NEWSPAPERS, INC.
 257 Michigan Ave. East Lansing, Mich. 48823

Uncle Lew from Lima Says:

DEAR MISTER EDITOR:

Ed Doolittle came to the meeting at the country store Saturday night with another fistful of clippings, and the first one he peeled off and waved before the fellers reported where the federal Government is spending \$102,000 to study drunk fish, and another \$90,000 to make drinks out of rats. The only good Ed said he could see in that research was that the booze drunk by the fish and rats won't get drunk by some two-leg rat out to get stewed to the gills.

The piece said Senator William Proxmire had given the alcoholic fish his "Golden Fleece of the Month" award for the worst waste of taxpayers' money. Ed said the good Senator ought to know one when it sees one, but for his money, he'd vote for the Army Corps of Engineers. Ed had said by the paper where the Army now wants farmers to have to take

out permits to plow. It ain't the Army's fault, Ed said, cause the courts has ordered the Corps of Engineers to come up with rules for draining and dredging around inland waters. Knowing the Army and their rules, Ed said, natural they went all the way with the job and come up with regulations covering everything from running a dragline in the river channel to hilling up a acre of corn.

General speaking, the fellers was agreed with Ed that a heap of our Government services is more of a burden. Clem Webster said he has been following the Department of Agriculture's research to come up with what country hams is, and he has decided that before them USDA boys make up their minds pork will be so high everybody will have forgot what it is. They started out, Clem reported, by drawing up "standards of identity" so they can tell what "country" and "ham" mean. After that, as far as they got was to rule that a hog don't have to be raised in the country to have country hams, and that folks who like to age their country hams a year or so can do it as long as the meat stays fit to eat. Clem said he didn't know what that research cost, but Senator Proxmire might want to try some with his grits and breakfast steak, now that bacon is to high to reach.

Actual, broke in Bug Hookum, it ain't just the Government agencies that has crazy ideas. But said he saw where this college in Dallas has a class on how to gamble on racehorses, and he said he won't be surprised next to find out you can go to college and get credit for crap shooting and cheating at poker without hiding under the football stands to do it. The teachers must of give up on learning youngsters to read and write, and settled for showing em how to make a living using the right numbers.

Ever once in a while, these little services backfire. Did you see the other day where that bank in Omaha was giving customers coffee and donuts ever morning? The cafe next door set up a booth to lend money at coffee break, and they put out a big cookie jar for a safe deposit box.

Yours truly,
 Uncle Lew.

Auto-Truck Stop Construction Underway

Motorists driving by the construction on Baker Rd. at the I-94 freeway have been wondering what's going on there. Union Oil Co. is building an auto-truck stop on 28 acres of the 32-acre site. The project will include a restaurant, a motel, a traveler's store and service station facilities for trucks and autos. Completion date for the entire complex is about June, 1978.

Children who react to verbal instruction only when they can see the speaker may be exhibiting a sign of a hearing loss and should be given a thorough hearing test, according to hearing specialists.

★ MICHIGAN MIRROR ★

By Elmer E. White, Secretary, Michigan Press Association

"Hunt Safety"
 Consider a hunter shooting both his own feet while trying to kill a "spooked" rabbit that ran up his pant leg.
 And the hunter who bent over to search for a "lost" knife that he'd forgotten he put in his hunting suit pocket. He stabbed himself.

And the 100 small game hunters hit by pellets fired by careless people who said they didn't even see their victims.
 "I don't like to discuss some of the tragedies of hunting accidents," says Frank Opolka, a law enforcement official with the Department of Natural Resources.
 "But for some people it is the only way to get the message of danger to hunters who have lost

respect for their weapons or their fellow hunters."

The percentage of Michigan hunters hurt every year is small in comparison to the total number of hunters, but 275 of 1.2 million licensed hunters were hurt in firearm accidents during the 1974 game seasons. Opolka says "there really shouldn't be any injuries."

He recommends wearing so-called "hunter orange" clothes. "It's the only color that stands out in a woods and it is unlike any color found in the out-of-doors," Opolka says.

The Department offers five additional precautions for hunters:
 —Be certain of your target.
 —Be certain no one is in your line of fire.

—Know where your hunting partners are.

—When unloading guns, check twice before considering them unloaded.

—Don't drink and hunt.

Shoppers Aren't Shot

Detroit, the "Murder Capital," safe for visitors?

It certainly is, declares Police Chief Philip G. Tannian, who says that "murder" title provides a distorted image of the Motor City. "During the first eight months of 1975, there has been only one homicide in the central business district," Tannian wrote in a letter to an organization interested in Detroit as a convention site. "Even that sole homicide cannot be classified as the type of violent street crime between strangers that is so feared by the general public."

Homicides and serious assaults overwhelmingly occur between friends or relatives and not strangers, Tannian continued, quoting from a study conducted by Wayne State University and a ranking Detroit police officer.

Not only are there few homicides downtown, he added, but also there are few instances of other violent crime.

"In this regard," he said, "an article in a local newspaper demonstrated that the chances of being a victim of violent crime in the downtown area were considerably less than in 'safe' suburban communities."

Emphasizing the safety of the downtown area, Tannian noted that two separate instances bear out his contentions:

—An estimated 500,000 people were in Detroit for the annual International Freedom Festival fireworks display. "Only a handful of rather minor criminal incidents were reported," he said.

—The World Energy Conference last fall was conducted "without a single serious criminal incident involving guests to the city."

Roadside Lots

A "park-it-to-pool-it" program involving rough-finished lots along state highways appears to be a hit with drivers who'd rather leave the navigating to someone else—and save gas at the same time.

The State Highway Department reports nearly doubled usage of its parking lots developed on state highway right-of-way property to encourage car-pooling.

Six months ago, an informal survey indicated usage at completed sites of 29 percent. Similar checks in mid-October turned up 54 percent usage.

The experimental program, put into motion a year ago by the Highway Commission, includes 52 sites in 21 counties, primarily at intersections of state highways.

Most sites were picked because cars already were being parked near the intersections while their drivers rode in other vehicles to and from their work.

The lots—graded, gravelled, unattended and free to motorists—cost an average of \$2,000 each. The Commission says heavy usage at a few of the lots might justify expansion.

34 Years Ago...

Thursday, Nov. 13, 1941—

President Alfred D. Mayer of the Kiwanis Club, has announced that the annual drive for funds to support the Boy Scout Troop of Chelsea began Monday evening. The Kiwanians will solicit contributions from the residents of Chelsea in order to finance and support this worthwhile endeavor.

Private Clyde E. Stone of Fort Bragg, N.C., who is visiting his parents, Mr. and Mrs. Howard Baker, was guest of honor at a pot-luck supper at the Legion Home on Saturday evening, Nov. 8. About 40 Legionnaires attended.

Girls Basketball...

(Continued from page one)

Teresa Breza with nine points. Sharon Donovan had six, Karen Tobin and Karin Roskowski each contributed four. Penny Collinsworth and Karen Keiser had two each and Terri Lutovsky scored one point.

EVERGREENS at a BARGAIN!

FALL CLEAN-UP SALE
 of All Our Fresh-Dug Potted Pine & Spruce Trees
 Our regular low price was \$4.50 ea.
 NOW 10 FOR \$20 WHILE THEY LAST!

Last fall I sold a full pick-up load of 100 trees to a customer from Kalamazoo at clean-up sale. He didn't lose a single tree. He bought another load this fall to plant on his acreage.

WE ALSO HAVE DIG-YOUR-OWN SPECIALS:
 3 Spruce trees 3 1/2 ft. tall for \$12.00
 and that is a bargain, wouldn't you say?

HEISE'S TREE FARM

N. side of I-94 at Exit 162, Fletcher Rd., turn east on Saitz Dr. 2 miles east of Chelsea. Open Wed., Sat. & Sun. 9 to 12 only.

DUNBAR'S DEXTER LOCKER

PAUL DUNBAR, OWNER
 8083 MAIN ST., DEXTER PHONE 426-8466

BEEF SIDES

98¢ lb. (Avg. 300 lbs.)

GET YOUR
 \$20 REBATE

ON READY-CUT ORDERS

DEER PROCESSING

Discount to Civic Groups - We Accept Federal Food Stamps

CUSTOM SLAUGHTERING & PROCESSING

Duane Luick, Linda Bennett Win Donald Johnson Scholarships

The first recipients of the Donald R. Johnson Memorial Scholarships were announced last Thursday at the County 4-H Recognition Night Event. Receiving \$150 scholarships were Duane Luick of Chelsea and Linda Bennett of Hamburg.

The son of Mr. and Mrs. Duane Luick of 12930 Old US-12, Duane Jr., is a 1975 graduate of Chelsea High school and a freshman majoring in music at Central Michigan University.

Miss Bennett, a freshman majoring in nursing at Michigan State University is the daughter of Mr. and Mrs. Glen Bennett.

The scholarship fund was established by the Board of County Commissioners as a memorial to the service provided to the people of the county by the late Donald R. Johnson. Johnson served as director of the Washtenaw County Co-operative Extension Service for nearly 26 years. His dedication to the youth in the 4-H program is memorialized by the scholarships which will be awarded during the next 10 years.



DUANE LUICK

Hockey Team...

(Continued from page one)

to help the team in this very tough schedule in the Michigan South Central Club Hockey League," Ringe remarked.

Chelsea will play Napoleon in an exhibition game Thursday night, Nov. 13 at 8:30 p.m. and a league game Sunday, Nov. 16 at 3 p.m. against the same Napoleon team.

FREE

EXTRA SAW CHAIN!

WITH PURCHASE OF ANY OF THESE 3 CHAIN SAWS

REMINGTON MIGHTY MITE CHAIN SAW

109⁹⁵

Free offer void where prohibited by law

Perfectly balanced

WITH FREE * 9.79 SAW CHAIN

Automatic trigger oiling

Lo-tone muffler

Rugged 10" bar

Tough performer cuts through trees up to 20" thick. Weighs just 6 1/2 lbs plus bar. Cushioned hand grip. Easy-start 34cc engine.

REMINGTON DELUXE CHAIN SAW WITH 14" CUTTING BAR

139⁹⁵

WITH FREE * 12.49 SAW CHAIN

34cc engine

Lo-Tone muffler

Automatic oiling

Cuts trees up to 28" thick. Comfort grips. Engine 6 1/2 lbs. 37-35131-36394

REMINGTON CHAIN SAW WITH 15-INCH CUTTING BAR

179⁹⁵

WITH FREE * 12.98 SAW CHAIN

46cc engine

Starting foot brace

Wood-gripping sticker

Zips through trees up to 30" in diameter! Lo-tone muffler.

THE LUTHERAN RETIREMENT COMMUNITY, INC.

SUBORDINATED DEBENTURES

up to **10%**

per annum, current yield, maturing in seven and one half years, interest payable semi-annually. The above interest rate is the maximum rate payable under the variable rate plan which is computed to be one percent over the prime interest rate prevailing at the Detroit Bank & Trust Co., trustee for the L.R.C. Inc. Available only to bona fide Michigan residents.

This announcement is neither an offer to sell nor solicitation of offers to buy these debentures. Such offering is made only in the information statement on request.

THE LUTHERAN RETIREMENT COMMUNITY, INCORPORATED

16935 West Fourteen Mile Road
 Birmingham, Michigan 48009 644-8912

Please send information to:

Name _____
 Address _____
 City _____ State _____
 Zip _____ Phone _____



CHARGE IT

Open Daily

8:30 a.m. to 5:30 p.m.

Friday till 9

Go Gambles

110 N. MAIN ST.

CHELSEA

Beach Gridders Turn in Fine 5-1 Season Record

(Continued from page one)

and scorer, started at fullback. Shawn Murphy, the team's leading pass catcher and who spearheaded the defense, played at flanker. The tailback was 7th grader Carl Simpson, who learned a lot of things that should make him ready for next year's Middle school varsity team.

Defensively, in addition to the above, most of whom also played on defense, were starters Keith Stillion (who learned very fast for his first year out), line-backers Randy Risner and Karl Bell and defensive halfback Dan Pagliarini. The team also got some excellent punting and kick-off work from Brad Knickerbocker who filled in at fullback on offense.

Others who played and rounded out the squad included Mark Cole who played tailback and defensive halfback Tim Sweeney at center

and defensive guard Howard Flint-off who centered for punts and played defensive end and tackle; Steve Hawker guard and line-backer; Bill Burgess offensive tackle; Todd Wright center and defensive tackle; Mark Barnes, Flanker; Pat Mayer, defensive end; Dan McGill offensive end; Barry Scott kick-off team and defensive back; and Blaine Sullivan kick-off team and offensive back.

Kruse summarized his team saying, "This year's squad, was a very coachable team and came a long way considering they weren't real big in size and the over-all team speed was average. However, the boys made up for it in aggressiveness and for the most part executed well on both offense and defense. We also felt that this squad had above average depth. There should be a good number of solid football players for the future."

High School Hosting Senior Citizens for Thanksgiving

As part of the year long bicentennial celebration being planned by Chelsea High school's faculty and staff, Senior Citizens Club members will be dinner guests of the high school on Nov. 26.

"A traditional Thanksgiving turkey dinner has been part of the school lunch program for many years now and since this is our 30th anniversary as well as our bicentennial year, we felt it was appropriate to bring young and old together", explained Mrs. Elsie Weiss, director of the school lunch program and originator of the idea. "It will also allow a segment of the community to see the kind of lunch program we try to provide here."

According to Mrs. Weiss, the meal will be typical of the National School Lunch Programs "Type A Lunch." This plan, in order to receive government reimbursement, requires that each student be given one serving from each of the Basic Four food groups. The groups include two ounces of

protein, such as meat or poultry, fruits and vegetables, breads and cereals, and milk. Participating in this plan allows the district to operate its lunch program without losing money and still provide well balanced, nutritionally adequate meals for Chelsea's young people.

Thirty or forty guests are expected. They will be met and escorted to the cafeteria by student council representatives who will host the group for the noon-time meal.

Glass Broken In Pub Door

An angry young man "accidentally" broke the full-length glass door at the Pub Bar, 113 S. Main St., Monday evening. According to Phillip Carpenter of 242 Madison St., the door broke when he walked out of the bar and slammed it behind him. Carpenter told Chelsea

JV Gridders Roll Over Northwest, 26-8

(Continued from page one)

help set up the first two touchdowns.

According to the team's coach, Jon Schaffner, "The only young men on the team that haven't been mentioned so far are all starting offensive players Don Harris, center, Dave Schrotenboer, tackle, and Jason Lindauer, guard. Another player, Ed Paul has been on the bench during the last two-thirds of the season because of injuries."

Schaffner remarked, "These fine young men had a 7-2 season and were 6-1 in the Southeast Conference."

Arrested on Bench Warrant for Drunk Disorderly Charge

Chelsea police arrested Herbie Roy Benson last Thursday evening on a bench warrant for drunk and disorderly charges issued by the Ann Arbor police department.

According to police reports the incident leading to Benson's arrest occurred when officers were heading north on S. Main St. and the approaching vehicle failed to dim its headlights. The officers turned and followed the 1969 Ford Fairlane and stopped the car. Police are familiar with Benson and made a spot warrant check on him, discovering that the Ann Arbor Police Department had a valid warrant out for his arrest on charges of failing to appear in 15th District Court on the above charges.

Officers arrested Benson and transported him to the station where a \$35 bond was posted. He was released to appear in court Nov. 7.

The case is closed for the Chelsea Police department.

Chelsea police that he was angry at being barred from the bar. Carpenter has offered to make restitution to the Pub's owner, Jack LaSage.



MARK SMYTH (69): At 5'9" 175 pounds, junior guard Mark Smyth has wound up a good season of play in his first year with the CHS varsity football team. Smyth has played in all but three of the Bulldogs' wins this season. And speaking of playing varsity next year? Not a doubt, Mark expects to see his name on the roster, saying he likes the team competition in the sport. Working on the individual aspects of sports Mark puts the shot for the track team. This spring will be his third with the track team. Aside from sports, Mark picks up some extra cash working at the Wolverine Bar. The son of Mr. and Mrs. Gerald Smyth, Mark has two brothers and one sister.

JOHN PUSH (72): Junior offensive and defensive tackle John Push says football is his main interest. "I like the competition," he added. John who stands 5'11" tall and weighs 198 pounds expects to stay with the same tackle position next fall. This year he has had the opportunity to practice the position in six games. Aside from a strong interest in football, John reports that he also enjoys bowling. Working at Chelsea Lanes, he finds that he bowls a lot and works on keeping his average above 150. The son of Mr. and Mrs. Melvin Push of 13415 Old US-12, John has one sister.

Full Line Supermarket

BEER - WINE - LIQUOR
LOTTERY TICKETS
MARATHON GAS PUMPS
2-CYCO GAS PUMPS
AUTHORIZED FOOD STAMP STORE

Jiffy market

Big Enough To Serve You . . . Small Enough To Know You!

Open 7 Days A Week
7 a.m. to 10 p.m.

Corner Werkner & Sibley Rds. PHONE 475-1701

Sale Prices Effective Thursday, Nov. 13 thru Sunday, Nov. 16

Guaranteed Satisfaction - Courteous Service

KLEEN-MAID		
WHITE BREAD	1-Lb., 4-Oz. Loaves	33¢
BREAST OF CHICKEN		
TUNA, Chunk Light	6 1/2-Oz. Can	48¢
MICHIGAN U. S. NO. 1		
POTATOES	10-Lb. Bag	98¢
U. S. GRADE A MEDIUM		
FRESH EGGS	1 Doz. in Crtn.	59¢
SAP'S		
GLAZED DONUTS	Doz. in Box	79¢
MICHIGAN		
SOUR CREAM	1 Pint Crtn.	49¢
NORTHERN ASSORTED COLORS		
TOILET TISSUE	Per Roll	15¢
U.S.D.A. Choice Freezer Beef		
SIDES - FRONTS - HINDS - LOINS - FULL RIB		
Cut, Wrapped, Frozen To Your Specifications.		
LOCAL FARM BEEF FOR SALE.		
CORN-FED BEEF AT ITS BEST!		

BORDEN'S ICE CREAM BASKART SPECIAL OLD FASHION ICE CREAM

REG. \$1.39 HALF GALLON **98¢** TOP QUALITY FLAVORS

ANOTHER HOSTESS LUNCH BOX SPECIAL

CHOCOLATE CUP CAKES 89¢

SAVE 26¢
8 ind. wrapped cakes
14 oz. in box

Tender Beef with Flavor!	
U.S. CHOICE BEEF CHUCK ROAST	
BLADE CUT	1b. 79¢
CENTER CUT	1b. 89¢
ARM CUT	1b. \$1.19
ENGLISH CUT	1b. \$1.19
Pork Butt Roast . .	1b. \$1.19
PORK STEAK . .	1b. \$1.29
HICKORY SMOKED SLAB	
BAGON . .	1b. \$1.39
YOUNG, TENDER	
BEEF LIVER . .	1b. 49¢
ECKRICH	
Roasting Sausage . .	1b. \$1.29
CAMELOT	
Liver Sausage or Braunschweiger . .	1b. 69¢
HAMBURGER MADE FROM YOUNG, TENDER	
GROUND CHUCK . .	1b. \$1.19
HAMBURGER MADE FROM ECKRICH	
GROUND ROUND . .	1b. \$1.29

FARM MAID
Homogenized

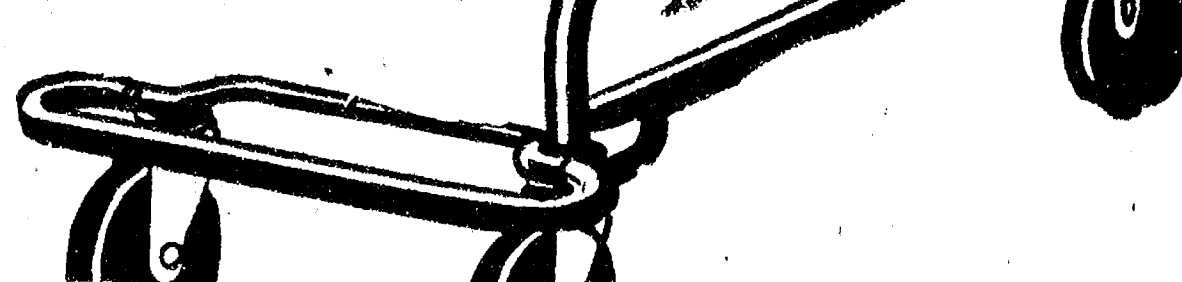
MILK
\$1.29
gal.

Buy The Best - Buy Farm Maid!

Think Milk

The Complete Food!
TO GO WITH MILK

DAD'S
Vanilla Wafers
49¢
1-Lb. Bag



JIFFY MARKET SPECIAL!
U.S.D.A. CHOICE BEEF

STEAK SALE

T-Bone Steak . . **\$2.29**
Club Steak . . . **\$2.19**

Sirloin Steak . . **\$1.79**
Porterhouse Stk. **\$2.39**

Tender, Delicious Steak that you can enjoy!

JIFFY MARKET MARATHON GAS
Top Quality Gas at Fair Prices, While Supply Lasts

REGULAR
GAS 55.9
Gal. Including All Taxes

OPEN 7 DAYS A WEEK
7 a.m. to 10 p.m.

MINIMUM SALE \$3.00

GAS PUMPS & STORE OPEN 7 a.m. to 10 p.m. 7 Days a Week - U. S. Authorized Food Stamp Store - Daily & Sunday Papers

+ Services in Our Churches +

CONGREGATIONAL CHURCH
(United Church of Christ)
The Rev. Carl Schwarm, Pastor
Thursday, Nov. 13—
1:00 p.m.—Rachel Chapter at Cecilia Bernath's.
7:30 p.m.—Choir.
Sunday, Nov. 14—
9:00 a.m.—Confirmation.
10:30 a.m.—Sunday school and worship.
Monday, Nov. 15—
7:30 p.m.—Counsell.
Wednesday, Nov. 17—
7:30 p.m.—Bible study.
Thursday, Nov. 20—
7:30 p.m.—Choir.

OUR SAVIOR LUTHERAN CHURCH
1515 S. Main, Chelsea
The Rev. William H. Keller, Pastor
Wednesday, Nov. 13—
7:30 p.m.—Choir.
Sunday, Nov. 14—
9:00 a.m.—Sunday school and Bible classes.
10:30 a.m.—Worship with Holy Communion.
3:00 p.m. to 7:30 p.m.—Mission Board Consultations.
Tuesday, Nov. 15—
7:45 p.m.—Church Council.
Wednesday, Nov. 17—
9:30 to 11:30 a.m.—Pre-school story hour.
4:00 p.m. to 6:00 p.m.—Confirmation classes.
7:30 p.m.—Evangelism committee meeting.
Thursday, Nov. 20—
7:30 p.m.—Choir. Sunday school staff meeting at church.

ST. JOHN'S UNITED CHURCH OF CHRIST
Rogers Corners
The Rev. Carl Asher, Pastor
10:00 a.m.—Worship service.

GREGORY BAPTIST CHURCH
The Rev. Paul White, Pastor
Every Sunday—
9:45 a.m.—Sunday school.
11:00 a.m.—Morning worship.
6:00 p.m.—Young people.
7:00 p.m.—Evening worship.
7:30 p.m.—Thursday mid-week worship service.

CHURCH OF JESUS CHRIST OF LATTER-DAY SAINTS
Meetings at
St. Barnabas Episcopal Church
20500 Old US-12
Every Sunday—
11:00 a.m.—Priesthood meeting.
12:30 p.m.—Sunday school.
5:30 p.m.—Sacrament meeting.

ST. PAUL UNITED CHURCH OF CHRIST
The Rev. R. J. Ratliff, Pastor
Thursday, Nov. 13—
3:00 p.m.—AA-J Association Executive Board.
7:00 p.m.—8:30 p.m.—Junior High.
Saturday, Nov. 15—
9:00 a.m. and 10:30 a.m.—Confirmation.
Sunday, Nov. 14—
9:00 and 10:30 a.m.—Church school.
10:30 a.m.—Worship.
Chancel and Joyful Noise choirs sing.
7:30 p.m.—Bell Choir Concert.
Tuesday, Nov. 16—
1:00 p.m.—Needle and Thread.
3:30 p.m.—Joyful Noise.
7:30 p.m.—Counsell.
Wednesday, Nov. 17—
1:00 p.m.—World Wide.
3:30 p.m.—Junior Youth Fellowship.
8:00 p.m.—Chancel choir.
Thursday, Nov. 20—
7:30 p.m.—Church school teachers to Ben Donaldson home.

ZION LUTHERAN CHURCH
Corner of Fletcher, Waters Rds.
The Rev. John R. Morris, Pastor
Thursday, Nov. 13—
7:30 p.m.—Holy Communion in story for 5th graders through 9th graders.
Saturday, Nov. 15—
9:00 a.m.—Youth instruction, 7th and 8th grades.
10:45 a.m.—Junior Choir.
Sunday, Nov. 14—
9:00 a.m.—Sunday school.
10:15 a.m.—Worship.
Monday, Nov. 15—
8:00 p.m.—Senior Choir.
Tuesday, Nov. 16—
10:00 a.m.—Activity sewing and noon pot-luck.
Thursday, Nov. 20—
7:30 p.m.—Holy Communion in story for 5th through 9th grades.

SALEM GROVE UNITED METHODIST CHURCH
3320 Notten Rd.
The Rev. Gerald R. Parker, Pastor
Every Sunday—
9:30 a.m.—Sunday school.
10:30 a.m.—Worship service.

WATERLOO VILLAGE UNITED METHODIST CHURCH
8118 Washington St.
Every Sunday—
11:15 a.m.—Worship service.

FIRST UNITED METHODIST CHURCH
Thursday, Nov. 13—
9:00 a.m.—Elizabeth Circle will meet at the home of Mrs. Martha Schultz.
1:00 p.m.—The Quilting Group will meet at the home of Mrs. Mary Kumpf.
8:30 p.m.—Weight Watchers will meet in the social center of the church.
Sunday, Nov. 14—
10:00 a.m.—Worship service, nursery provided. The Rev. Ralph Huppert, guest speaker.
10:30 a.m.—Church school, four years old through the sixth grade.
11:00 a.m.—Coffee and punch hour.
11:15 a.m.—Junior, senior high and adult church school.
2:30 p.m. to 5:00 p.m.—District youth program, "Your Purple Puzzle," at Ypsilanti First United Methodist church.
Monday, Nov. 15—
8:30 p.m.—Church school teachers dinner.
7:30 p.m.—Church school teachers planning and training session.
Tuesday, Nov. 16—
9:00 a.m.—Charismatic Bible sharing group will meet in the educational unit.
7:30 p.m.—Wesleyan Circle will meet for a pot-luck in the large instruction room of the educational unit.
Wednesday, Nov. 17—
9:00 a.m.—Sarah Circle will meet at the home of Mrs. Mary Lou Haliburton.
1:00 p.m.—Ruth Circle will meet in the Crippled building.
3:30 p.m.—KINDER Choir.
4:00 p.m.—Glory Choir.
4:30 p.m.—Praise Choir.
8:00 p.m.—Chancel Choir.
Thursday, Nov. 20—
1:00 p.m.—The Quilting Group will meet at the home of Mrs. Mary Kumpf.
8:30 p.m.—Weight Watchers will meet in the Social Center of the church.

ST. THOMAS EVANGELICAL LUTHERAN
Elisworth and Haab Rds.
The Rev. Jerome Dykstra, Pastor
Thursday, Nov. 13—
4:15 p.m.—Confirmation class.
4:30 p.m.—Choir rehearsal.
Sunday, Nov. 14—
9:30 a.m.—Sunday school and Bible class.
10:45 a.m.—Worship with Holy Communion.
Tuesday, Nov. 16—
7:30 p.m.—Evangelism Callers.
Thursday, Nov. 20—
4:15 p.m.—Confirmation class.
8:00 p.m.—Choir rehearsal.

METHODIST HOME CHAPEL
Chaplain Ira Wood, Pastor
Every Sunday—
8:45 a.m.—Worship service.

BAHA'I FIRESIDE
Every Thursday—
8:00 p.m.—At the home of Toby Peterson, 705 S. Main St. Anyone wishing to learn about the Baha'i faith is welcome.

WATERLOO FIRST UNITED METHODIST
Parks and Territorial Rds.
Every Sunday—
9:15 a.m.—Morning worship.
10:00 a.m.—Sunday school.

NORTH LAKE UNITED METHODIST CHURCH
The Rev. David Stiles, Pastor
Every Sunday—
8:30 a.m.—Early service.
10:00 a.m.—Worship service, receiving of new members.
10:00 a.m.—Sunday school.

FIRST UNITED PRESBYTERIAN CHURCH
Unadilla
The Rev. T. H. Liang, Pastor
Every Sunday—
9:45 a.m.—Sunday school.
11:00 a.m.—Worship service.

FIRST ASSEMBLY OF GOD
The Rev. Thelma B. Thodeson, Pastor
Every Sunday—
9:45 a.m.—Sunday school.
11:00 a.m.—Worship service.

CHELSEA BAPTIST CHURCH
377 Wilkinson St.
The Rev. James Stacey, Pastor
Every Sunday—
8:45 a.m.—Sunday school for the family.
11:00 a.m.—Morning worship service and children's church.
7:00 p.m.—Evening service, informal singing, sharing, study and discussion. (Nursery care provided for all services).
Home Bible Studies each week in the homes of the leaders.
Teen Ministry, Sunday at 6 p.m. and study groups during the week.

ST. JOHN'S EVANGELICAL AND REFORMED CHURCH
(United Church of Christ)
Francisco
The Rev. Virgil King, Pastor.
Every Sunday—
10:30 a.m.—Worship service Sunday school.

NORTH SHARON BIBLE CHURCH
Sylvan and Washburne Rds.
The Rev. William Enslin, Pastor
Every Sunday—
10:00 a.m.—Sunday school. (Nursery will be available.) Junior church classes.
11:00 a.m.—Worship service.
6:00 p.m.—Senior High Youth meeting. Youth Choir.
7:00 p.m.—Evening worship services. (Nursery available.)
All services interpreted for the deaf.
Every Wednesday—
7:00 p.m.—Bible study and prayer meeting. (Nursery available.) Bus transportation available. 428-7223.

You and Your HOME
... one of the reasons we're in business ... with automatic showmobile, outboard motorboat and swimming pool liability protection at no extra cost in every Homeowners policy. Check the facts.

DAVE ROWE
107 1/2 S. Main
Chelsea, Mich.
Ph. 475-8063

FARM BUREAU INSURANCE GROUP

St. Louis School Notes

Among the fans who watched Michigan slaughter Purdue, 23-0, last Saturday afternoon were the boys of St. Louis school. Game tickets were compliments of the Michigan Athletic Office. According to Fr. Umberto Mellare the boys were especially impressed with the Michigan and Purdue bands. Members of the Purdue band appeared at half-time with the largest drum in the world ... a special treat to see.

Visiting St. Louis school last week were residents from the Chelsea Methodist Home. Among them was Mrs. Van Valkenberg from whom the land upon which St. Louis school is built was purchased.

ne senior citizens toured the facility and the new dorms and listened to a talk on mental retardation versus mental illness given by Fr. Umberto in the multi-purpose chapel of the school. Prior to a reception given for the citizens by house mother, Mrs. Robbins, they were entertained by the St. Louis School Band. Fr. Umberto remarked that the group was impressed with the well-mannered behavior the boys exhibited, especially when they toured Mrs. De-You's class of younger boys. Following coffee, tea, cold drinks and cookies served by Mrs. Robbins, the senior citizens left, extending an invitation to the boys band to play for the Christmas party at the Home in December.

Sunday afternoon the boys were given complimentary tickets to the North Lake Co-op Nursery's production of Bozo and Mr. Whoochini at Chelsea High school. Providing the tickets for the afternoon entertainment were Mr. Rooke and the Chrysler Proving Grounds.

CHURCH OF CHRIST
1366 Old US-12, P.A.
Evangelist John M. Hamilton
Every Sunday—
10:00 a.m.—Church school.
11:00 a.m.—Worship service.
Nursery will be available.
6:00 p.m.—Worship service.
Every Wednesday—
7:30 p.m.—Bible study.

IMMANUEL BIBLE CHURCH
145 E. Summit St.
The Rev. LeRoy Johnson, Pastor
Every Sunday—
9:45 a.m.—Sunday school, nursery provided.
11:00 a.m.—Morning worship, nursery provided.
7:00 p.m.—Evening worship.
Every Wednesday—
7:00 p.m.—Family hour, prayer meeting, and Bible study.

ST. JACOB EVANGELICAL LUTHERAN CHURCH
12501 Riehmiller Rd., Grass Lake
The Rev. Andrew Bloom, Pastor
Every Sunday—
9:00 a.m.—Worship service.
10:15 a.m.—Divine services.

ST. BARNABAS EPISCOPAL CHURCH
20550 Old US-12
The Rev. Fr. Jerrold F. Beaumont, B.S.P.
Every Sunday—
10:00 a.m.—Holy Communion first, third and fifth Sundays, and 8 p.m. every Wednesday.
10:00 a.m.—Morning prayer. Second and fourth Sundays. Church school and nursery every Sunday.
Every Wednesday—
9:00 p.m.—Study and discussion groups.
First Wednesday of every month Bishop's Committee.
Third Thursday of every month—Episcopal church women.

BETHEL EVANGELICAL AND REFORMED CHURCH
(United Church of Christ)
Freedom Township
The Rev. Roman A. Reineck, Pastor
Every Sunday—
10:00 a.m.—Worship service.

ST. MARY CATHOLIC CHURCH
The Rev. Fr. David Philip Dupuis, Pastor
Mass Schedule:
Every Saturday—
4:00-5:00 p.m.—Confessions.
4:00 p.m.—Mass.
Immediately after 7 p.m. Mass—Confession.
Every Sunday—
8:00-9:00 p.m.—Confessions.
7:00 p.m.—Mass.

WATERLOO VILLAGE UNITED METHODIST CHURCH
8118 Washington St.
Every Sunday—
11:15 a.m.—Worship service.

ST. JOHN'S EVANGELICAL AND REFORMED CHURCH
(United Church of Christ)
Francisco
The Rev. Virgil King, Pastor.
Every Sunday—
10:30 a.m.—Worship service Sunday school.

NORTH SHARON BIBLE CHURCH
Sylvan and Washburne Rds.
The Rev. William Enslin, Pastor
Every Sunday—
10:00 a.m.—Sunday school. (Nursery will be available.) Junior church classes.
11:00 a.m.—Worship service.
6:00 p.m.—Senior High Youth meeting. Youth Choir.
7:00 p.m.—Evening worship services. (Nursery available.)
All services interpreted for the deaf.
Every Wednesday—
7:00 p.m.—Bible study and prayer meeting. (Nursery available.) Bus transportation available. 428-7223.

ST. JOHN'S EVANGELICAL AND REFORMED CHURCH
(United Church of Christ)
Francisco
The Rev. Virgil King, Pastor.
Every Sunday—
10:30 a.m.—Worship service Sunday school.

NORTH SHARON BIBLE CHURCH
Sylvan and Washburne Rds.
The Rev. William Enslin, Pastor
Every Sunday—
10:00 a.m.—Sunday school. (Nursery will be available.) Junior church classes.
11:00 a.m.—Worship service.
6:00 p.m.—Senior High Youth meeting. Youth Choir.
7:00 p.m.—Evening worship services. (Nursery available.)
All services interpreted for the deaf.
Every Wednesday—
7:00 p.m.—Bible study and prayer meeting. (Nursery available.) Bus transportation available. 428-7223.

ST. JOHN'S EVANGELICAL AND REFORMED CHURCH
(United Church of Christ)
Francisco
The Rev. Virgil King, Pastor.
Every Sunday—
10:30 a.m.—Worship service Sunday school.

NORTH SHARON BIBLE CHURCH
Sylvan and Washburne Rds.
The Rev. William Enslin, Pastor
Every Sunday—
10:00 a.m.—Sunday school. (Nursery will be available.) Junior church classes.
11:00 a.m.—Worship service.
6:00 p.m.—Senior High Youth meeting. Youth Choir.
7:00 p.m.—Evening worship services. (Nursery available.)
All services interpreted for the deaf.
Every Wednesday—
7:00 p.m.—Bible study and prayer meeting. (Nursery available.) Bus transportation available. 428-7223.

ST. JOHN'S EVANGELICAL AND REFORMED CHURCH
(United Church of Christ)
Francisco
The Rev. Virgil King, Pastor.
Every Sunday—
10:30 a.m.—Worship service Sunday school.

NORTH SHARON BIBLE CHURCH
Sylvan and Washburne Rds.
The Rev. William Enslin, Pastor
Every Sunday—
10:00 a.m.—Sunday school. (Nursery will be available.) Junior church classes.
11:00 a.m.—Worship service.
6:00 p.m.—Senior High Youth meeting. Youth Choir.
7:00 p.m.—Evening worship services. (Nursery available.)
All services interpreted for the deaf.
Every Wednesday—
7:00 p.m.—Bible study and prayer meeting. (Nursery available.) Bus transportation available. 428-7223.

ST. JOHN'S EVANGELICAL AND REFORMED CHURCH
(United Church of Christ)
Francisco
The Rev. Virgil King, Pastor.
Every Sunday—
10:30 a.m.—Worship service Sunday school.

NORTH SHARON BIBLE CHURCH
Sylvan and Washburne Rds.
The Rev. William Enslin, Pastor
Every Sunday—
10:00 a.m.—Sunday school. (Nursery will be available.) Junior church classes.
11:00 a.m.—Worship service.
6:00 p.m.—Senior High Youth meeting. Youth Choir.
7:00 p.m.—Evening worship services. (Nursery available.)
All services interpreted for the deaf.
Every Wednesday—
7:00 p.m.—Bible study and prayer meeting. (Nursery available.) Bus transportation available. 428-7223.

ST. JOHN'S EVANGELICAL AND REFORMED CHURCH
(United Church of Christ)
Francisco
The Rev. Virgil King, Pastor.
Every Sunday—
10:30 a.m.—Worship service Sunday school.

ne senior citizens toured the facility and the new dorms and listened to a talk on mental retardation versus mental illness given by Fr. Umberto in the multi-purpose chapel of the school. Prior to a reception given for the citizens by house mother, Mrs. Robbins, they were entertained by the St. Louis School Band. Fr. Umberto remarked that the group was impressed with the well-mannered behavior the boys exhibited, especially when they toured Mrs. De-You's class of younger boys. Following coffee, tea, cold drinks and cookies served by Mrs. Robbins, the senior citizens left, extending an invitation to the boys band to play for the Christmas party at the Home in December.

Sunday afternoon the boys were given complimentary tickets to the North Lake Co-op Nursery's production of Bozo and Mr. Whoochini at Chelsea High school. Providing the tickets for the afternoon entertainment were Mr. Rooke and the Chrysler Proving Grounds.

GIRL SCOUTS

TROOP 64
Our troop has been meeting for six weeks. We were working on our investment which we had Oct. 29 at St. Mary's school. We have six new girls in our troop. They are: Tammy Erskine, Kim Hamrick, Laura Nix, Kelly Robertson, Brenda Rush and Sonya Steele. We have had three birthdays: Kelly Murphy, Sept. 29; Kelly Robertson, Oct. 18; and Laura Anderson, Oct. 20. The girls brought birthday treats to our meeting. On Oct. 15 we walked to the library where Miss Anderson showed us all the books. We are planning a trip together to the Methodist Home before Thanksgiving.

TROOP 169
Brownie Troop 169 met Monday at the Methodist church. Jennifer Lindsay brought chocolate brownies. We made tamborines out of paper plates, bottle tops and yarn. For a good deed we peeled potatoes for the next meeting.
Sara Noah, scribe.

TROOPS 442, 82
Today some of the girls in our troop finished making corsages for gifts. Other girls made centerpieces. Mrs. Heilman, our troop leader, brought popicles in for treats. Some girls were busy cutting squares out of materials for the patchwork pillows Mrs. Boyd is going to help us make next week.
Kim Boyd, scribe.

TROOP 689
Girl Scout Troop 689 had an election last Wednesday, Nov. 5. Patrol leaders elected were Kathy Degener, Kristin Thomas, and Julie Patrick. Treasurer and scribe were Diane Barrels and Beth Heller. Badge work and Pen Pals were discussed. Halie Schmidt brought treats.
Beth Heller, scribe.

Heading the list in field corn producing counties are Lenawee, Huron, Gratiot, Branch and Calhoun. Michigan in 1974 had a field corn harvest of 110.4 million bushels, yielding an average of 61 bushels per acre. Though this was a 23 percent drop from 1973, value per bushel was up to \$3.45, compared to 1973's \$2.52. Total crop in 1974 was 1.8 million acres with a value of \$380,915,000, to rank us 11th among the states.

O Son of Being!
Thou art My lamp and My light is in thee. Get thou from it thy radiance and seek none other than Me. For I have created thee rich and have boundlessly shed my favor upon thee.
BAHA'I SCRIPTURES.



MIKE CHECK (42): At 5'8" 130 pounds, junior halfback Mike Check has played in about three of the varsity games this year. Admittedly at the beginning of the year he expected to play more often, but said he realized that senior players on all the teams are the ones who see the most action. With the football season closing, Mike has joined the Chelsea High schoolers hockey team. He thinks they will have a good season this year and when asked if he thought the school might take it on as a sport, replied he did not think so because of the expense involved for ice rink rental and equipment. In the spring Mike hopes to see his name among those on the varsity baseball roster. The son of Mr. and Mrs. John Check of 17145 Fahrner Rd., Mike has four sisters and one brother.

DAVID FLETCHER (89): "It was beautiful," said senior split end David Fletcher when speaking of the Bulldogs' final victory of the 1975 season over Jackson Northwest last Friday evening, giving the team a perfect season. Despite the fact that David said "it was not one of my better games," he added "we (the seniors) have wanted to be 9-0 since we were in the 8th grade. That's why it was so great ... our last game, the Conference title and a season of total victories." David

said he does not plan to continue in college football. "I don't think I am good enough and besides that high school football provided me with enough excitement." This was his second year with the varsity team. After a winter of rest and assuming his duties as president of the National Honor Society, David said he will probably go out for tennis in the spring. The son of Mr. and Mrs. David W. Fletcher of 991 Ridge Rd., David has two brothers, Mark and Danny, and two sisters, Diana and Louise.

KEVIN KELLY (86): This year and what a year, was Kevin Kelly's first with the varsity Bulldogs. In spite of not playing "to any great extent" Kevin remarked that he enjoyed all the players. The 5'8" 135 pound senior split end and safety said "I get into a different sport every year trying to find the one that I really like." Apparently it is track, for this will be Kevin's fourth year with the team. In the past he has dabbled in basketball and wrestling. In track he runs sprints, the 100 and 220 and was named fourth in the Southeastern Conference last year for his performance in the 220. The son of Mr. and Mrs. Robert W. Kelly of 501 Maywood, Kevin has three older sisters.

CUB SCOUT NEWS

DEN 1, PACK 455
We met Tuesday, Nov. 4 at Mrs. Donovan's house. We started with the flag ceremony. We talked about our project for the next meeting, we made newspaper hats, and played a game with them. Brian Donovan brought treats.
Dorothy Wadyke, scribe.

DEN 2, PACK 455
On Monday we went to McDonald's. We went through it with Den 4. After that we got hamburgers and an orange drink. He showed us a cold room and where they fry stuff and downstairs and where the cups are. Bobby Kelly, scribe.

DEN 15, PACK 435
We opened the meeting reciting the Cub Scout promise. Mrs. Martin, our den mother, gave us our parts to learn for a Thanksgiving performance at our next pack meeting. We had a treat of cookies and cider and then we went outside and played games.
Eric Stofflet, scribe.

DEN 4, PACK 455
We began our meeting by saying the pledge and then we had our treats brought by Joey McDougall's mother who was our helper. Jason Pierson won the game prize. We are doing bi-centennial projects for the month of November and made bumper stickers. We are all

TABLE LAMPS
November Sale — 25% Off
DESK & BED LAMPS — 20% Off

SUNBURST HOME ACCESSORIES
3578 Plymouth Rd., Ann Arbor Phone 994-9059
Near Win Schuler's

HURON FARM'S GOLD BARN CIDER MILL
3481 N. ZEEB RD. - DEXTER
Announces Its NEW

COLD STORAGE
to insure crisp, fresh fruit through the year.

We also have
Freshly Pressed Cider - Hot Donuts - Taffy Apples - Honey
All Varieties Apples - Seasonal Fruit
OPEN DAILY

McGALLA FEED SERVICE
Phone 475-8153
12875 Old US-12, Chelsea

WAYNE CALFNIK & CALF KRUNCH
From Allied Mills
The Innovators

LOSE UGLY FAT
Start losing weight today or money back. MONADEX is a tiny tablet and easy to take. MONADEX will help curb your desire for excess food. Eat less - weigh less. Contains no dangerous drugs and will not make you nervous. No strenuous exercise. Change your life ... start today. MONADEX cost \$3.00 for a 20 day supply. Large economy size is \$8.00. Also try AQUATABS, they work gently to help you lose water-weight. AQUATABS - a "water pill" that works - \$3.00. Both guaranteed and sold by:
CHELSEA DRUG STORE
161 N. Main St. - Mail Orders Filled

HEIFERS REPAY HANDSOMELY—Grow 'Em Right!
At Wayne Research Farm twin 3-day-old heifers went on test.
One was fed Wayne Calfnip medicated non-cereal milk replacer followed by Wayne Calf Krunch. The other: whole milk, hay, grain, soybean meal.
Wayne-fed heifer was ready for breeding earlier, calved earlier, produced milk 3 months earlier. And 2 1/2 years later, showed a profit difference over twin sister of \$164.28!
Better stop in.



Suppose you were sued for \$500,000 ... and lost! Would you be able to stay out of bankruptcy? And what would happen to your family security? Suits involving hundreds of thousands of dollars are all too frequently started against businessmen and professionals simply because they are well-known as affluent and successful people! Here's an economical way to avoid such a risk! Our Executive Liability Insurance provides up to \$6,000,000 of protection for you and your family. Call us now. We can probably put all your liability insurance together and even save you some money.

it's better
altogether
A. D. MAYER AGENCY, INC.
BOB BAKLOW, AGENT
PHONE 475-2030
115 PARK ST., CHELSEA

Auto-Owners Insurance
Life Home Car Business



Mr. and Mrs. Charles F. Foytick

Kimberle Fisher, Charles Foytick Speak Vows in Ann Arbor Church

Kimberle Ann Fisher became the bride of Charles Frederick Foytick in Zion Lutheran church Friday, Nov. 7. The Rev. Fred Holtfreter, the Rev. R. J. Knaus and Father David Dupuis performed the ceremony for the daughter of Dale Fisher of Grass Lake and Carol Fisher of Ann Arbor and the son of Mr. and Mrs. Daniel Foytick of Chelsea.

Maid of honor was Debra Sue Fisher, sister of the bride, of Ann Arbor. The bridegroom's brother, Richard of Manchester served as best man. Bridesmaids were the bride's

sister, Patricia of Chelsea, Lisa Foytick of Manchester, Mary Young of Chelsea, Laura Denton, and Kelly Love, both of Dexter, and Debra Williams of Stockbridge. Ushers included the bridegroom's brother, Skip of Chelsea, the bride's brother Matt, of Chelsea, Brian Arnett, Larry Doll, Bob Schuelke and Ron Landwehr, all of Chelsea.

Following a reception at the American Legion in Saline the couple left for a honeymoon in Jamaica.

Upon their return, they will make their home in Ann Arbor.

Leslie Kelemens Honored Sunday on 25th Anniversary

Mr. and Mrs. Leslie Kelemens of 14120 Edgewater, were feted on the occasion of their 25th wedding anniversary last Sunday by their five children and very close friends.

The couple's children Kurt, Karen, Debra, Gary and Valerie and their close friends gave a surprise open house Nov. 9 at the Inverness Country Club. Approximately 100 guests were present to honor the couple.

The Kelemens were married Nov. 10, 1950 in Detroit. They have resided in the area for 15 years. Mr. Kelemens is employed with Merkel's.

Beta Sigma Phi Completes Plans For Fashion Show

Xi Gamma Mu Chapter of Beta Sigma Phi met Tuesday, Nov. 4 to discuss final plans for their fashion show Wednesday evening. Lavonda Hayes presented a program using slides and literature on historical art museums in Cooperstown, N.Y. Emphasis was on a bicentennial display her daughter had programmed for one of the museums.

The group's fashion show was held Wednesday evening at St. Paul's church. Guests enjoyed fashions from Karen's Boutique and Strieter's Men's wear. Karen Johnson, owner of Karen's boutique, was the commentator for the evening. Modeling were Gayle and Al Cordell, Judy Barkley, Bob Rieboldt, Jan Longworth, Donna Brand and Betty Koch.

Entertainment was provided by "Sundance," Kim Longworth and Linda Montgomery.

Following the showing, refreshments were provided and served by chapter members and two \$10 gift certificates were awarded for items from Karen's Boutique as well as some door prizes provided by chapter members.

The next meeting of the group will be held Nov. 18 at the home of Ruth Blecha.

Marathon Bridge Club Standings

The Marathon Bridge program committee would like to remind their members that all money sent in the form of checks made payable to the Woman's Club of Chelsea.

October standings are as follows:

Day League	Points
Team 5	5,570
Team 7	4,860
Team 3	4,580
Team 10	4,550
Team 6	4,360
Team 9	3,900
Team 8	3,890
Team 1	3,770
Team 2	3,690
Team 4	3,270
Evening League	Points
Team 17	8,780
Team 15	6,090
Team 13	6,030
Team 19	5,980
Team 12	4,590
Team 16	3,810
Team 20	3,690
Team 18	3,660
Team 14	2,730
Team 11	2,350

Carefully protect your God-given ability to hear, warn hearing specialists. Once this ability has been lost, it often cannot be regained.

Magic Mirror Beauty Salon

Open Tuesday thru Friday
9 a.m. to 9 p.m.
Saturday, 8 a.m. to 3 p.m.

PHONE 665-0816

CARPET REBIRTH

Give your carpet a new lease on life
by cleaning it regularly.

JET SPRAY CARPET CLEANING

Use Your BankAmericard Phone 761-3025 or 475-1509
Ask for John Lixey.

WASHTENAW COMMUNITY COLLEGE

offers
AUTOMOTIVE MINI COURSES

at
AUTOMOTIVE SERVICE CENTER
5115 CARPENTER ROAD, YPSILANTI, MICHIGAN

BASIC TUNE UP 043 \$20.00

Meets Saturdays, Starting November 15, 1975 for Six Weeks.
Time: 8:30 a.m. to 11:30 a.m.

Class will be involved with proper installation of plugs, points, and condensers, and necessary adjustments that go along with the installation of these parts. Only the emission controls necessary to do minor tune-ups will be covered. This class will be pre-requisite to the Advanced Tune Up Class to be offered later and assumes a basic knowledge of the automobile engine.

ANYONE INTERESTED IN ENROLLING IN THIS COURSE MUST CALL THE AUTOMOTIVE SERVICE CENTER AT 434-1555 AND PRE-REGISTER. CLASS SIZE WILL BE LIMITED TO 18. YOU MUST BE PRE-REGISTERED TO BE IN THE COURSE.



Mrs. Robert D. Herrst

Christine Schirmacher, R. Herrst Are Wed at Our Savior Church

Christine Adele Schirmacher and Robert Donald Herrst spoke their wedding vows Saturday, Nov. 8, before the Rev. William H. Keller and 100 guests at Our Savior Lutheran church.

Mrs. Karen Keller played the organ for the ceremony. The bride is the daughter of Mr. and Mrs. Eugene H. Schirmacher of 642 S. Main St. Mr. Herrst is the son of Mr. and Mrs. Bernard D. Herrst of 780 Freer Rd.

For her wedding the bride wore a white nylon gown with a high Brussels lace neck and empire waist. Brussels lace trimmed the A-line skirt and train of the gown. Her elbow-length veil was held in place with a lace cap. She carried a floating cascade of white feather tulle accented with white roses, baby's breath and streamers of ivory.

Miss Sandra Pfund of Wauson, O., served as the maid of honor. She was dressed in a gown of polyester jersey. The sweetheart empire styled gown was V-necked

and sleeveless. A floor-length cape covered the gown during the ceremony. She carried a bouquet of orange woburn abbey roses accented with baby's breath and satin streamers.

Bridesmaids were Miss Carolyn Schirmacher, the bride's sister, of Chelsea, Miss Margery Parson of Dexter, and Miss Debra Rooke of Chelsea.

They were gowned identically to the maid of honor in colors of blue and bottle green. Each carried bouquets of yellow roses accented with baby's breath and satin streamers.

For her daughter's wedding Mrs. Schirmacher chose a gown of aqua polyester with a knitted bodice and jersey floor-length skirt. A knitted jacket covered the sleeveless gown and she pinned a corsage of yellow roses to her jacket.

Mrs. Herrst chose a floral print gown with an empire waist and matching jacket. She pinned a corsage of white roses to her gown.

The bridegroom's brother, B. Ronald of Chelsea, served as best man. Erwin Herrst and Kenneth Herrst, also brothers of the bridegroom were ushers as was Thomas W. Hepburn, all of Chelsea.

Following the ceremony, a reception was held in the Chelsea Fair Service Center. Miss Marivo Botts assisted by the bride's sister, Candace Schirmacher and the Misses Elizabeth and Susan Herrst, sisters of the bridegroom, were hostesses. Mrs. Harold Kerr kept the guest book and Miss Karmel Lombard poured the punch for the 175 guests. The wedding cake was made by the bridegroom's mother.

The bride is a 1975 graduate of Chelsea High school. She attended Adrian College and is employed with the Chelsea Methodist Home.

Mr. Herrst is a 1974 graduate of Chelsea High school and is employed at the Huron Valley Garden Center in Ann Arbor.

Following a motor trip through Canada, New York, Pennsylvania and Ohio the couple will make their home at 115 South St.

VFW Auxiliary Plans Annual Bazaar Dec. 5-6

A regular monthly meeting of the Ladies Auxiliary, Veterans of Foreign Wars 4076 was held Monday, Nov. 11 in the VFW Hall. Twelve members attended.

Mrs. Ruth Devine was elected and initiated into membership. Also elected members were Mary Parsons, Eleanor Jones and Barbara Abdon.

Youth Activities chairman Lucy Platt displayed the citation the Auxiliary received for the donation made to Camp Trotter. This award was presented at the Pow Wow held in Traverse City last month. Also attending from the local auxiliary were Joan Barnes and Geraldine Klink.

Legislative chairman E. Bernice Schneider urged all present to write Representatives, Senators and Congressmen regarding the Michigan Veterans Trust Fund which may be taken away if not enough interested citizens voice their objections.

Elizabeth Smith reported on the area Bicentennial meeting she had attended. She also reported on the safety program she is working on, stating she expects to obtain reflecting arm bands for cyclists. Eulabee Packard, Lucy Platt and Elizabeth Smith gave reports of the Sixth District meeting held Sunday, Nov. 2 in Maybee.

In lieu of a Thanksgiving basket, the group voted to pay three Auxiliary Sisters dues. One dollar for each Auxiliary member was voted for Cancer aid and research fund to the Department of Michigan.

The annual Auxiliary Bazaar will be held Friday and Saturday, Dec. 5-6 in the local VFW meeting hall. Named to act as chairman of the bazaar was Mary Kniss.

The group decided to meet and attend in a body the meeting in the Sylvan Town Hall Wednesday, Nov. 12.

Rebekahs Attend Reception for Lodge's State President

A reception honoring Mrs. Leone Hall was held Saturday evening, Nov. 8 at the Masonic Temple in Jackson. The reception was given by the Rebekah Lodges of District 12.

Mrs. Hall, a member of the Home City Lodge of Jackson was elected president of the Rebekah Assembly of Michigan at the Convention held in Grand Rapids Oct. 21.

Among the 190 guests present were Mr. and Mrs. Clifford Wolfe, Mrs. Nina Lehmann, Mrs. Eulabee Packard, Olla Voelm and Mrs. Franklin Gee. The ladies acted as hostesses for the evening and worked along with Mrs. Donna Feldkamp of the planning committee.

At the regular Lodge meeting on Nov. 4, Mrs. Lehmann gave her report of the Assembly Convention held in Grand Rapids. While there, she was awarded the Decoration of Chivalry, the highest honor given by her own lodge. Also attending were Mrs. Packard and Mrs. Lillian Sanderson.

The second nomination of officers will be held at the next regular meeting Nov. 18.

Mrs. Lula Sweeney attended the lodge meeting before leaving for Florida last Friday.



Mr. and Mrs. Ronald G. Warner

Pamela Padgham, Ronald Warner Speak Wedding Vows Saturday

Pamela Sue Padgham became the bride of Ronald Gene Warner, Saturday, Nov. 8 at the First Congregational church. The Rev. Carl Schwarm officiated.

The bride is the daughter of Mr. and Mrs. George Padgham of Chelsea. Mr. Warner is the son of Mr. and Mrs. Jim Warner of Battle Creek.

For her wedding the former Miss Padgham chose a gown of ivory jersey. Her ivory veil was edged in lace and she carried a cascade of white roses accented with coral roses and baby's breath.

Serving as maid of honor was Susan Settle of Chelsea. She was dressed in a gown of coral jersey and carried a colonial bouquet of bronze 'mums accented with coral roses. Bridesmaids were Diane Zeeb and Joanne Lafontaine. They wore identical jersey gowns of forest green and carried colonial bouquets of yellow 'mums and talisman roses.

The bridegroom's brother, Robert, served as best man. Grooms-men were Pat Hogan and Kevin Warner. Ushers were David White and Jim Settle.

Following the ceremony a reception was held at the Chelsea Rod and Gun Club.

The couple will make their home at 517 Marie Ave., Battle Creek.

ALTAR SOCIETY

St. Mary's Altar Society met and finalized plans for the Christmas Bazaar and Bake Sale to be held Nov. 22 in the Sylvan Township Hall. The sale will begin at 9:30 a.m. Chairman and co-chairman are Mrs. Albert Forner, Mrs. George Bretschneider and Mrs. Mary Kniss.

The program chairman introduced Mickey Quackenbush who demonstrated the making of nylon net Christmas trees and Christmas wreaths using colorful bows.

The December meeting will be an exchange of gifts.

Refreshments were served by Mrs. Del Erickson and committee.

KINDER KLUB

Kinder Klub met Nov. 11 at the home of Veretta Whitaker. Guest speakers for the evening were Susie Eisele and Doug Foreman. Both speakers are in the high school advanced speech class.

Sarah Coventry Jewelry

Norma Jean Smith
Phone 475-8984

NOVUS Electronic Digital Watches



NOVUS doesn't just give you accuracy. Or the reliability you'd expect from a solid-state electronic watch. They also give you exceptionally fine styling and a broad range of models from \$89 to \$170.

WINANS JEWELRY

Great Selection of LEISURE SUITS

Huge Inventory of
SILKY-LOOK
MEN'S SHIRTS

Be Sure To Look for Our
MOOD RINGS

Special on Women's Trissi Slacks

APPAREL FOR
THE ENTIRE FAMILY

LAY AWAY NOW
FOR CHRISTMAS

DANCER'S
Chelsea's Friendly Dept. Store

A QUALITY PAINT SAVES YOU MONEY!



COVERS MORE!
LOOKS BETTER!
LASTS LONGER!

Quality Dutch Boy House Paint saves you money because its superior hiding power helps you cover more surface area.
• Its tough, lustrous finish wears slowly, evenly.
• Flows on smoothly, easily.
Get Dutch Boy House Paint from us today!

If there's quality on the inside, there's a Dutch Boy on the outside.

You will remember the quality of Dutch Boy paints long after the price is forgotten.

MERKEL
Home Furnishings

Community Calendar

Band Boosters at Beach Middle school Nov. 13 at 7:30. Immediately following the short meeting will be the Pops Concert performed by the 8th grade band under the direction of Warren Mayer.

VFW Auxiliary 4076 annual bazaar and bake sale Dec. 5 and 6 at their meeting halls 105-B, N. Main St. Friday from 9-5 p.m.; Saturday from 9-1 p.m. adv 21

Chelsea Jaycees Annual Blood Drive for holiday accident victims will be held Saturday, Dec. 20. Contact Howard O'Dell at 475-8190, Bob Meyer at 475-1277, or Bob Ponte at 475-9191, if you care to donate blood.

Chelsea Child Study Club presents "Christmas Bazaar" Saturday, Dec. 6 from 9 a.m. to 3 p.m. at the Sylvan Town Hall, Chelsea. Baked goods and hand-made Christmas items will be on sale. advx25

Ann Arbor Stamp Club 1975 Stamp Show Saturday, Nov. 15. Large Community Room at Briarwood Mall. The show will feature exhibits and stamp dealers from several states and Canada. Hours, from 9:30 a.m. to 9:30 p.m. Public invited to attend. Free admission.

Huron Valley Mother of Twins, Monday, Nov. 17, 8 p.m., St. Francis Church Library, 220 S. E. Stadium Blvd., Ann Arbor. Program, presentation of children's literature by Diana Howard of Logos bookstore. For further information call Mrs. Fran Mullaly at 475-2943 or Mrs. Karen Koch at 475-2874.

Chelsea Co-op Nursery rummage sale, Friday, Nov. 14 from 9-5 p.m., Sylvan Town Hall. Donated items may be brought to the hall on Nov. 13 from 9 to 11 a.m. from Nov. 1 to 3 p.m. and 7 to 9 p.m. Saturday is \$1 a bag, day from 9 to 11 a.m. advx21

St. Mary's Altar Society Thanksgiving and Christmas Bazaar and Bake Sale. Saturday, Nov. 22, 9:30 a.m. to 5 p.m. in the Sylvan Town Hall. adv.21

Plant and Pot salad luncheon, Thursday, Nov. 20, 12:30 p.m., North Lake United Methodist church. For tickets call 475-7388. adv x22

St. Mary annual Fall Dance, Saturday, Nov. 22, 9 a.m., Chelsea Rod and Gun Club. Music by The Researchers. Tickets \$7.50 a couple, available at Merkels, Chelsea Drug. adv 23

Chelsea Jaycees first Tuesday of every month. Board meeting, fourth Tuesday of every month at Chelsea Lanes. Meetings begin at 7:30 p.m., guests are welcome.

Chelsea Community Farm Bureau, Thursday, Nov. 13, 7 p.m. Pot-luck supper at the home of Mr. and Mrs. George Brettschneider, with Mr. and Mrs. Dorr Whitaker assisting hosts.

Notice to Hunters. Hot coffee and donuts will be available at the First United Methodist Church of Waterloo, corner of Park and Territorial Rd., all day Saturdays through the deer hunting season.

Rogers Corners Farm Bureau, Friday, Nov. 14, 8:30 p.m. at Freedom Township Hall.

Past Matrons of Olive Chapter 108 OES pot-luck Thanksgiving dinner, meat furnished, Wednesday, Nov. 19 at 6:30 p.m. at the Masonic Hall. Bring your husbands.

Children's Story Hour for three and four year-olds McKune Memorial Library, Wednesday mornings from 10-11 a.m.

Key Club Fun Night, Friday Nov. 14, from 6:30 to 10:30 p.m. at the high school gymnasium. Refreshments available. 50 cents grades K-8, and 75 cents grades 9-12.

Washtenaw Community College Alumni Association will meet Monday, Nov. 17 at 7 p.m. in lecture hall one of the Exact Science building on the campus. Committee appointments will be made. All former students are invited to attend.

The Bookmobile from the Washtenaw County Library will stop weekly on Wednesdays from 4:15 to 4:45 p.m. at the North Lake Methodist church. From 5 p.m. to 5:30 p.m. Wednesdays, the bookmobile will be at the Cavanaugh Lake Store.

Inquiries regarding the Chelsea blood bank may be directed to Harold Jones in the event that Mrs. Dudley Holmes is unavailable, or to Robert Moyer, American Red Cross in Ann Arbor, 971-3300.

St. Mary's Parish Cookbooks will be on sale at the Altar Society Bazaar and Bake Sale, Nov. 22 at 9:30 a.m. at the Sylvan Town Hall. adv.21

Annual Chelsea Fair Board Meeting, Thursday, Nov. 13, 8 p.m. at the Chelsea Fair Service Center.

Ann Arbor Art Association is sponsoring a show of paintings by Priscilla Garm, Ann Arbor resident and graduate of the Boston Museum School, at the Ann Arbor public library, 343 S. 5th in the meeting room. Exhibit open during library hours, Nov. 3-29.

Congressman Bob Carr's Mobile Office Van will be in Chelsea from 12 noon to 1:30 p.m. Friday, Nov. 7 and Monday, Dec. 22.

Weekly Tuesday Nite Singles Club, dance, 9 p.m. to midnight Ann Arbor "Y," with live band.

Humane Society of Huron Valley has dogs and cats for adoption. Owners may reclaim their lost pets. Phone 662-5585. Open from 9 a.m. to 5 p.m. daily; Sunday, 1 p.m. to 5 p.m. 100 Cherry



ENTERTAINING MEMBERS OF THE CSA N- trition program last week were "Rusty 'n' Me." Pictured from left, Stephany Gates, Olin Siegrist, Rusty, a dummy, and ventriloquist Joeline Platt. Rusty Nails, Betty Koch and Joeline Platt.

Fall Sports Awards Announced

(Continued from page one)

Receiving junior varsity awards were Rocky Brandel, Jeff Powell, Randy Harris, Ed Paul, Mike Young, Mike Hagen, Matt Fisher, Jim Welshans, Brian Kalishek, Steve Pennington, Rick Beeman, Rick Risner, Don Harris, Steve Dresch, Matt McClellan, Randy Reinhardt, Gary Packard, Todd Headrick, Steve Check, Jason Lindauer, Jim Stirling, Dave Schotenboer, Vic Vercherreau, Phil Steinhauer, James Bollinger, Scott Stafford, Mike Sweeney, Bill Van Riper, Todd Weber and Chuck Broderick.

Freshman numerals were awarded to Jesse Colburn, Doug Clark, Al Augustine, Joe Verway, Greg Reed, Chuck Young, Jim Leach, Ray Sabo, Scott Price, Bob Osterlander, Tim Bareis, Craig Kallish, Joe Keiser, Steve Marriott, Scott Powers, Lucas Lovely, Tom Bareis, Bart Bauer, Gary Thornton, Steve Hegadorn, Dan Trinkle and Jeff Eibler.

Freshman managers were Brad Smith, Tim Pennington and David Hill Rd., quarter-mile south of Plymouth Rd. at Dixboro.

Pap tests are free for all area women, Tuesday mornings, at St. Joseph Mercy Hospital, Ann Arbor. Call American Cancer Society office, 668-8857 for appointment.

Sylvan Township Board meeting the first Tuesday of the month, at 7 p.m., at Sylvan Township Hall.

OES Rummage Sale Nov. 13-14, 9 a.m. to 5 p.m. at the Masonic Temple. For pick-up call 475-1141 or 475-1803 or 475-2705. adv 22

Lamaze Association of Ann Arbor is now holding classes at the Chelsea Community Hospital. If interested, call 761-4402, or 475-9316.

American Legion and Auxiliary hospital equipment available by calling Guy Freysinger at 475-1961.

Senior Citizen Fun Nite every Friday evening at 7:30.

Tours of Chelsea Community Hospital and surgical center are available for small groups. To arrange for tours, call: Neva Jordan, 426-8027, or Dorothy Miller 475-8020.

TOPS (Take Off Pounds Sensibly) is back in Chelsea. Come join us. What can you lose, but unwanted pounds. For information call 475-8139 or 475-8905.

Chelsea Co-op Nursery applications for 1975-76 classes are now being taken. For information, call Pearl Mull, 426-8822 or Leslie Bowers, 475-1401. advx124f

Chelsea Home Meal Service delivers one hot meal a day to elderly and disabled living in the Chelsea area. For information call 475-8014 or 475-2023.

AA and Al-Anon meeting, Monday evenings at Chelsea Hospital, 8:30 p.m. Closed meetings.

Lane. Assisting Bill Bajnton in his coaching effort this year was Dave Nicewicz.

Receiving third-year varsity cross country awards were Bill Rademacher, John Storey, Phil Frame, Morris Johnson and Rick Haller. Dean Thompson was awarded a second-year pin. Mark Bucholz and Scott Beyer were awarded first-year letters.

Jeff Sweet, Chris Minick and Brian Herrick were awarded junior varsity letters. Numerals were awarded to Joe Marentette.

Receiving varsity letters from

Bicentennial Plans Made By High School

Chelsea High school staff and students are hard at work formulating plans to help celebrate our country's bicentennial, according to chairperson Laurice Lazebnik. Teachers and students in almost every class are selecting commemorative projects that take us back through the years to the founding of our country, yet are related to the subject being studied in school. "That can be quite a feat in itself," said Mrs. Lazebnik, "when you consider the diversity of such classes as math, agriculture, German of child development."

No special time limit has been set for individual class or department activities, so projects are being scheduled any time during the school year. The faculty, however, has designated Feb. 9-12 Bicentennial Week at Chelsea High school. Preliminary plans call for a week of programs, demonstrations, and displays, beginning with more serious treatment of our country's history, progressing to projects on the lighter side.

Copies of the school plans are being submitted to the Bicentennial Co-ordinator of the Michigan Department of Education. Events as they are about to happen will appear in The Standard.

Tranquilizers Leave Woman in Critical Condition

Chelsea police officers Graves and Yager were called to the School House Apartment address of Roseann Gimney last Saturday evening after being notified that the woman had taken an overdose of sleeping pills.

When police arrived, they found Mrs. Gimney in a distraught state. She told police that she had taken some tranquilizers and had drunk some beer.

Officers transported her to the Chelsea Medical Center for treatment of an overdose.

Recent reports list her in critical condition.

Telephone Your Club News To 475-1371.

DEATHS

K. D. Tressler

Former Area Resident Dies at Newberry Hospital

K. D. Tressler, formerly of Cavanaugh Lake, died Monday, Nov. 3 at Newberry Hospital in Newberry, following a short illness.

Mr. Tressler was born Dec. 5, 1902 in Pennsylvania. He was employed with the Stinson Aircraft Co. in Wayne prior to his retirement. Later he went into the resort business on North Manistique Lake. Mr. Tressler was a member of the Masonic Lodge.

Masonic services were held and burial followed at McMillan cemetery in McMillan.

Surviving are one son, K. D. Tressler of Sparta, Wis.; a daughter, Mrs. Beverly Myers of Westland, and four grandchildren.

BIRTHS

A son, David Phillip, Nov. 2 at St. Joseph Mercy Hospital, Ann Arbor, to Mr. and Mrs. Gary Seitz of 687 S. Lima Center Rd. Maternal grandparents, Mr. and Mrs. W. W. Werner of Chelsea. Paternal grandparents, Mr. and Mrs. George Elkins of Chelsea.

A daughter, Lisa Jean, Oct. 30 at St. Joseph Mercy Hospital, Ann Arbor, to Mr. and Mrs. Robert Koenigter of 12351 Waters Rd. Maternal grandparents, Mr. and Mrs. John Steele of Munith. Paternal grandparents, Mr. and Mrs. Loren Koenigter of Chelsea.

Congr. Bob Carr In Town Saturday For Public Forum

Congressman Bob Carr will hold a Public Forum in Chelsea and Dexter this Saturday, Nov. 15 to meet personally with area residents. Carr will be at the Dexter Village Hall in Dexter from 11 to 12:30 p.m. and in Chelsea from 1 to 2:30 p.m. at the Sylvan Town Hall. The public is encouraged to attend.

REPLACE BROKEN GLASS in STORM DOORS

with **Warp's FLEX-O-GLAZE**

SAFETY ACRYLIC PLASTIC

FLEX-O-GLAZE is crystal clear, non-yellowing, guaranteed shatterproof. Safe... has no sharp cutting edges. Easy to cut, score or saw. Comes in standard sheet sizes. Priced like glass.

At Your Hardware, Lumber and Building Supply Store
WARP BROS. Chicago 60851
Pioneers in Plastic For Over 50 Years

College Representatives To Meet With Seniors

Colleges and University representatives will be visiting Chelsea Monday, Dec. 8, Olivet, 1 p.m. High school in the coming weeks. Students interested in speaking with counselors and seriously in with college representatives should terested seniors. They are as fol-report to the conference room in lows: Adrian College Friday, Nov. the counselor's offices at the listed 14 at 1 p.m.; Monday, Nov. 24 times. According to CHS counse-the University of Michigan, 11 a.m. for George Bergman, parents are Monday, Dec. 1, Lake Superior also invited to attend.

You work hard, you need a good, hot meal when you get home. But you don't want it to take all night.

Get an Amana Radarange

COOKING WITH THE AMANA RADARANGE MICROWAVE OVEN

Cooking with the Amana Radarange microwave oven takes 1/4th of the usual time. So you'll have 3/4th of the time it normally takes to cook... to do other things.

- Automatic gourmet-defrost cycle. Lets you slow-cook or simmer. And defrosts meats and other frozen food in minutes.
- Clean-up is quick, too, because you cook on glass, china, right on the plate you're going to eat from! Even paper plates.
- Only the food gets hot. The oven and the kitchen stay cool. So do you!
- The stainless steel oven interior wipes clean in a jiffy, because splatters can't bake on.
- The Radarange saves energy, too. Uses 50 to 75% less electricity than a conventional range!

If it doesn't say **Amana** -it's not a Radarange

See us for a very convincing demonstration.

HEYDLAUFF'S

113 N. Main St. Phone 475-1221

PENDLETON, USA

STRIETER'S MEN'S WEAR

"The Place To Go For Brands You Know"

Classic tartans and contemporary plaids combine with Pendleton styling to make this shirt an important part of an active man's wardrobe.

\$23 to \$26.

250 Ft. Coils **ROMEX** With Ground

14/2 **\$13⁹⁵** 12/2 **\$18⁹⁵**

WHY PAY MORE

-AT THE HOME CENTER CHELSEA LUMBER

HEY, WE'RE NO. 1!

Congratulations to all the Bulldogs and to Coach Bareis and his staff for a job well done, and to the large following of loyal Chelsea fans for their support each week. We are also very proud of Dale Parker Headrick, an employee of Pump & Pantry.

PUMP & PANTRY

295 SOUTH MAIN ST.

"Home of the Chelsea Bulldogs"



TOUCHDOWN RUN: Chelsea senior halfback Howard Salyer (32) is off on a 43-yard run to complete a 69-yard drive and touchdown for the Bulldogs. The TD came in the third quarter of play last Friday evening when the Bulldogs met Cascade Conference champions Jackson Northwest to record their final victory of the '75 season.

JV Girls Cage Team Loses Two

The Chelsea JV girls basketball team lost a heartbreaker to Lincoln last Tuesday by a score of 31-28. "We led the entire game until the fourth quarter when we received one foul after another," said coach Cindy Bradbury. The girls were given 15 free throws, made six of them and were defeated by three points. "It was a very frustrating loss because once again we played a good game," added Bradbury.

High scorer for the game was Sue Heydlauff with 11 points. Tracy Hawker had five, and also scoring were Joan Lutovsky, Gail Hume, Jackie Lamb, Nancy Knott and Sheryl Kiel.

The Chelsea JV girls basketball team hosted Novi last Thursday and came up on the short end of a 1-22 score. "We consider this a minor victory even though we lost because the first time we played Novi they beat us by 40 points," Bradbury said. The girls played a good defensive game, holding Novi to one of their lowest scores of the season. Unfortunately they were unable to score in the first and third quarters. "That lost it for us. We had our usual good fourth quarter when we scored eight of our 12 total points." As usual the game ended before the girls could repair all of the damage.

Sue Heydlauff scored eight of the 12 points and Joan Lutovsky and Lori Miles each had two.

Coach Bradbury noted that the girls' game scheduled for Nov. 18 with Saline at home, has been changed to be played on the opponents' court.

Plea of Guilty Entered in Death Of Walz Couple

Stanton-Bert H. Hunt, 17, of Riverdale, pled guilty to manslaughter in connection with the deaths of Lloyd, 28, and Frances Walz, 28, of Grass Lake.

The plea came one day before the youth was to go to trial before Circuit Judge Leo B. Bebeau on an open charge of murder. Jailed in lieu of bond, Hunt will be sentenced upon completion of the pre-sentence investigation.

The Waltzes were killed June 24 when a thrown rock caused their motorcycle to crash into a tree on M-46 east of Edmore.

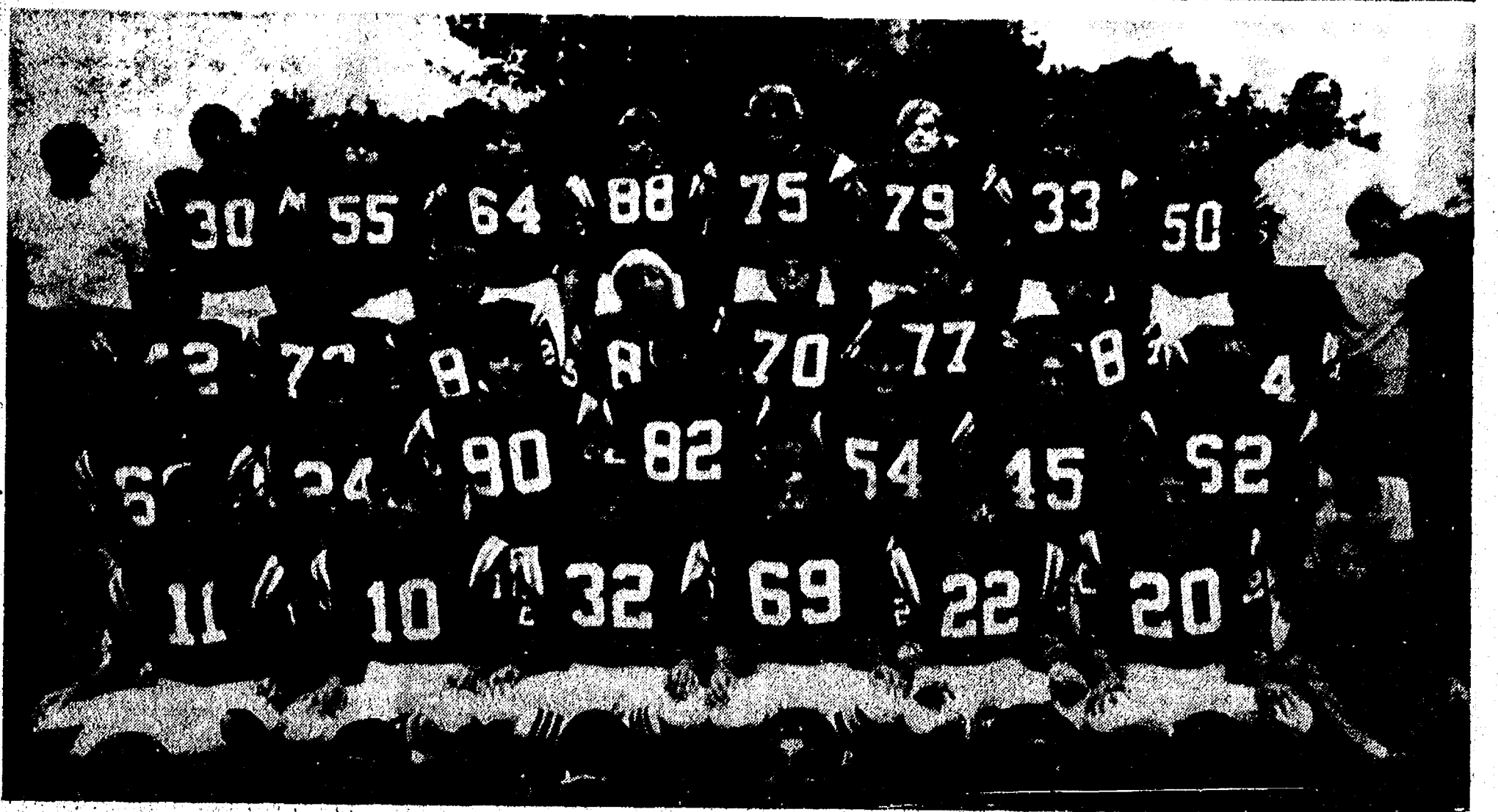
In about an other year we will be able to stop going to the barber and begin using car wax and a soft cloth.

THE CHELSEA STANDARD

Second Section

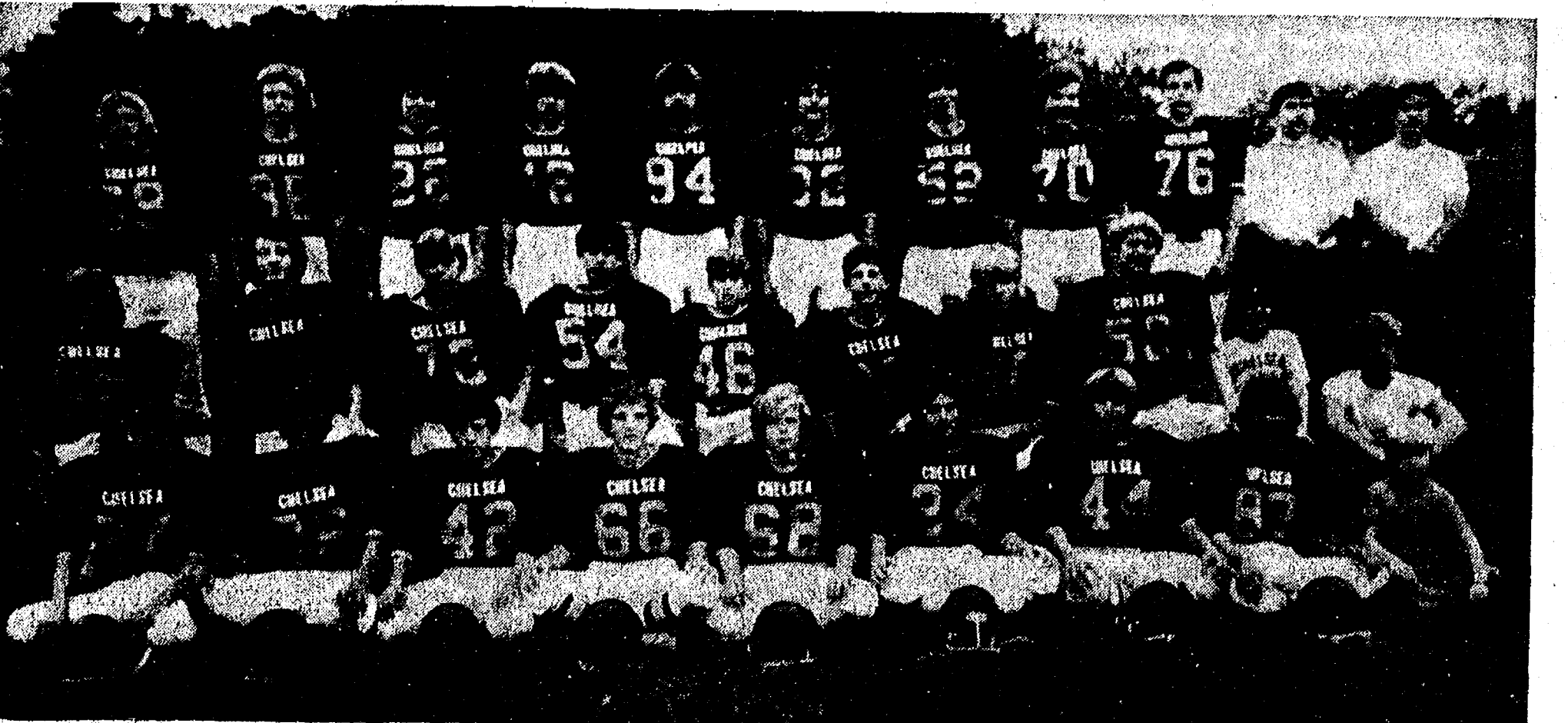
CHELSEA, MICHIGAN, THURSDAY, NOVEMBER 13, 1975

Pages 6-12



1975 BULLDOG JUNIOR VARSITY TEAM: This group of young men marked a 7-2 season over-all and a 6-1 season in the Southeastern Conference. Not quite, but almost as good as their varsity counterparts. Seated, front, from left, are Jeff Powell, Rocky Brandel, Brian Kalishek, Steve Check, Mike Young, Ed Paul and manager Richard Slater. In the second row from left, Brad Reinhardt, Mike Hagen, Scott Stafford, Mike Sweeny, Steve Dresch,

Rick Risner, Gary Packard and manager Eric Schaffner. In the third row from left, Steve Pennington, Jim Stirling, Chuck Broderick, Bill Van Riper, Jason Lindauer, Victor Verchereau, Phil Steinhauer, Rick Deeman and manager Dave Weber. In the fourth row the team's coach Jon Schaffner, Matt Fisher, Matt McClear, Todd Headrick, Todd Weber, Dave Schrotenboer, James Bollinger, Tim Welshans, Don Harris and coach Tom Neumeyer.



1975 BULLDOG FRESHMAN TEAM: Up and coming football stars playing their first year with the high school football team are, seated front from left, Craig Kalishek, Dan Trinkle, Chuck Young, Ben Kincer, Joe Kelsner, Joe Verwey, Jim Leach, Steve Hegadorn and manager Dave Lane. In the second row from left, Bruce Donovan, Bart Bauer, Lucas Lovely, Tim Bareis, Doug Clark, Tim

Brown, Gary Thornton, Scott Price and managers Tim Pennington and Brad Smith. Standing from left, Steve Marriot, Jeff Eibler, Alan Augustine, Jess Coburn, Kris Steinaway, Greg Reed, Bob Ostrander, Scott Powers, Tom Bareis and coaches Dave Nicewicz and Bill Bainton.

SEC ROUND-UP:

Chelsea Closes Perfect Season With Win at Jackson Northwest

Last Friday evening, for their final contests of the 1975 season and their final chances to mark up another victory, SEC Conference teams met non-league opponents. True to form, the famous Chelsea Bulldogs pulled another victory out of the hat, defeating the Cascade Conference Champions Jackson Northwest, 21-14, but not without some effort.

The Bulldogs' victory Friday evening marked up a perfect season of 9-0 for them. However, the slim hopes they had of participating in state play-offs were destroyed when their main contenders Jackson Lumen Christi also won their battle Friday evening.

Northville 20, South Lyon 0—At the bottom of the SEC roster, 1-6, the South Lyon Lions couldn't get passed Northville quarterback

Eric Lampella Friday evening. Lampella was able to do almost all the scoring for his team, running two touchdowns and passing for another. His scores came on runs of 39 and three yards. Scoring after receiving a 19-yard pass from teammate Lampella was Gary Winemaster.

Michigan Center 28, Dexter 8—

The Dreadnaughts wound up their 1975 season sharing the bottom rung on the SEC conference ladder with South Lyon. Any hopes they may have had of inching up were dashed Friday evening as the

Cardinals from Michigan Center trounced them 28-8. Ironically, because for the non-SEC team, it was their first win of the season.

The game was paced by two touchdowns marked up by Michigan Center player Randy Robinson. Robinson returned an interception for 33 yards and was on the receiving end of a six-yard pass from Scott Forward for his two tallies.

The Dreadnaughts' only score came when Darrel Varrelman passed to Mark Ianni for 25 yards.

Novi 20, Carleton Airport 15—

The Wildcats fought back last Friday night after an early touchdown by their Carleton Airport opponents to win their final game, 20-15.

Dale Malone scored from three yards out, only two minutes into the game to give Carleton an early lead.

However, Randy Wroten, Andy McComas and Doug Maire rushed for Novi touchdowns to give their team the victory.

Novi's John Pisha caught three key passes for 98 yards.

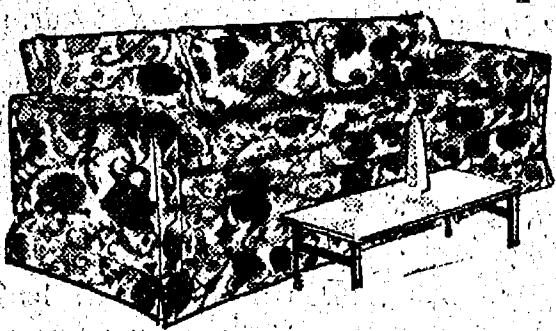
Pinckney 14, Brighton 3— Despite the fact that Brighton's Bulldogs were defeated 14-3 by the Pinckney Pirates Friday evening, they finished the SEC season at 4-5, their best record in many years of playing football. So all was not bad for the Bulldogs.

The game and a potential victory looked good to the Bulldogs Friday evening as they held their oppo-

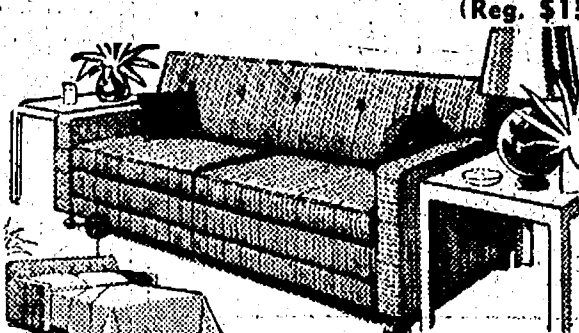
(Continued on page 12)

FURNITURE SALE

Thursday, 1 to 8 p.m. - Friday, 11 to 8 p.m.



BUNK BEDS (3 sets only) \$48
BUNK BEDS with bunky, ladder and rails \$135
NEW SOFA & CHAIR \$125
NEW MATTRESS & BOX SPRINGS \$49 (Reg. \$139)



NEW SOFAS \$95
NEW DINETTE SETS \$55
NEW BEDROOM SETS \$135
HIDE-A-BEDS \$135 (Reg. \$349)

KNIGHTS OF COLUMBUS HALL

1915 JACKSON RD., OFF MAPLE - ANN ARBOR

BRING THIS AD FOR FREE GIFT

OUCH! The Old Grouch Is Back Cutting Prices Again!

12-OZ. CANS
COCA-COLA 8 pac \$1.39

FARMER PEET'S RE-PEETER
SLICED BACON 1-Lb. Pkg. \$1.39

FARMER PEET'S
PLAYTIME FRANKS 1-Lb. Pkg. 89¢

80-LB. BAG MORTON'S
WATER SOFTENER PELLETS \$2.99

DINTY MOORE
BEEF STEW 40-Oz. Can \$1.39

2-PLY SPARTAN
FACIAL TISSUES 200-Ct. Box 49¢

BASIN, TUB, TILE
LYSOL CLEANER 17-Oz. Aero Can 89¢

GALA DECORATOR ASSTD.
PAPER TOWELS 2-Ply Roll 49¢

RICK'S MARKET

Just North of Chelsea on M-52

"The Friendly Store"

Phone 475-2898

Mobil-Toons

By GLENN



"Cut down on that dux."
We dux the best wash job in town.

GLENN'S MOBIL SERVICE

1622 M-52 & I-94
CHELSEA, MICHIGAN
Phone 475-1767
GLENN HEIM
PROP.

NOW OPEN

Monday thru Saturday, 8 a.m. to 6 p.m.

Complete Line of Automotive

PARTS and ACCESSORIES

- ★ AP EXHAUST SYSTEMS
- ★ GABRIEL SHOCKS
- ★ BORG-WARNER IGNITION
- ★ WAGNER BRAKES
- ★ MOOG CHASSIS PARTS
- ★ AC - DELCO
- ★ VICTOR GASKETS
- ★ GATES BELTS & HOSES
- ★ ARROW ELECTRICAL PRODUCTS
- ★ CHAMPION SPARK PLUGS
- ★ ROCKWELL POWER TOOLS
- ★ GOODYEAR TIRES

SPECIAL THRU NOVEMBER

GABRIEL RED RYDER

SHOCKS

Buy 3 - Get 4th FREE!



CHELSEA AUTOMOTIVE

1414 S. Main, Chelsea

Phone 475-9106

Ads
Taken
11 p.m.
Tuesday

Advertise the Action Way! The Want Ad Way!

Just
Phone
475-1371

WANT ADS

The Chelsea Standard

WANT AD RATES

PAID IN ADVANCE—All regular advertisements, 75 cents for 25 words or less, each insertion. Count each figure as a word. For more than 25 words add 3 cents per word for each insertion. "Blind" ads or box number ads, 50c extra per insertion.

CHARGE RATES—Same as cash in advance, with 25 cents bookkeeping charge if not paid before 1 p.m. Tuesday preceding publication. Pay in advance, send cash or stamps and save 10 cents.

DISPLAY WANT ADS—Rate, \$1.40 per column inch, single column width only. 2-point or 4-point type only. No borders or boldface type. Minimum 1 inch.

CARDS OF THANKS or MEMORIALS—Single paragraph style, \$1.50 per insertion for 50 words or less; 3 cents per word beyond 50 words.

COPY DEADLINE—1 p.m. Tuesday week of publication.

NEW natural "Grapefruit Extract Pill" from Harvestime Nutritionals more convenient than grapefruits. Eat wholesome meals and lose weight. Chelsea Pharmacy. -24

CHELSEA

NEW LISTING—Excellent location, 4 bedrooms, breezeway, attached 2-car garage, new siding, new roof, walking distance to schools, \$48,500.

\$19,500—Mobile home on lot with access to Bruin Lake.

TREE-LINED DRIVE to this large older farm home, 28 acres, barns, outbuildings, located between Chelsea and Ann Arbor on blacktop.

MORE LAND AVAILABLE with this 4-bedroom home on 3 acres, dining area, family room, stone fireplace, Grass Lake schools.

COMMERCIAL BUILDING — Village of Manchester, suitable for your business venture, \$22,500.

DEXTER SCHOOLS — 23.1 acres, frontage on two roads, \$51,900.

TECUMSEH AREA — 69 acres of good farming land, \$87,500.

DEXTER SCHOOLS — 3-bedroom, brick ranch with walk-out, lower level, dining room, first floor laundry, dry, many extra nice features, 10 acres.

FRISINGER REALTORS

Chelsea 475-8681

Evenings—
Bob Koch 475-4754
Toby Peterson 475-2718
Hope Bushnell 475-7180
Burke Fitzgerald 878-6603
Paul Frisinger 475-2621
George Frisinger 475-2903
Herman Koenn 475-2131

WOULD SHARE HOME in village in exchange for responsible woman who would do some housework, laundry and some cooking. Phone 428-9609 between 3 and 8 p.m. Will talk of payment. -x22

ALBER FARMS

ORCHARD - CIDER MILL
Member Michigan Certified Farm Markets
Northern Spy and Ida Red

Sweet Cider - Whiskey Barrels
New Kegs - Potatoes - Misc. Items
Open All Winter Daily
9 a.m. to 6 p.m.
except Thanksgiving, Christmas and New Year's Day.

13011 Bethel Church Road
Manchester - 428-7758

CLOCKS REPAIRED — Any old antique type clocks, coo-coo clocks and grandfather clocks. Call Fred Petsch, 475-8494. -22

WANT ADS

PATCHING and PLASTERING
Call 475-7489. -33t

CLOGGED SEWER

Reynolds Sewer Service

We Clean Sewers Without Digging
Drains Cleaned Electrically

FREE ESTIMATES

2-YEAR GUARANTEE

Phone Ann Arbor NO 2-3377

"Sewer Cleaning Is Our Business—Not a Sideshow" -38t

WANTED — Men (17 thru 27 years of age) for Security police training. Good starting salary and fringe benefits. Call your Air Force representative at 973-1830. -29

C—ustom Built Homes

O—hi We Remodel too

U—can count on us

N—o Job Too Small

T—rim Inside & Out

R—ough-In Only If

Y—ou Want to Finish

S—iding Aluminum, 5" Gutters

I—mmediate Attention

D—ALE COOK & CO.

E—stimates, Free

BUILDERS

Please Call

475-8863

DALE COOK

17t

BOB'S LOCK & KEY

Complete Locksmithing Service

Commercial, Residential,

Automotive

Luggage locks repaired.

475-9071

-41t

GEORGE W. SWEENEY

HEATING

Licensed Contractor

Furnaces, air conditioning,

and sheet metal work.

Phone 475-1867

-20t

CAR RENTAL by the day, week-

end, week or month. Full insur-

ance coverage, low rates. Call

Lyle Christwell at Palmer Motor

Sales, 475-1301. -25t

J. R. CARRUTHERS

LICENSED

RESIDENTIAL BUILDER

CUSTOM HOMES

ADDITIONS/FIREPLACES

PATIO

ROOFING/SIDING/REPAIRS

475-7234

CHELSEA

30t

FOR RENT—4,300 ft. office and

warehouse with loading dock.

Paved off-street parking. In Dex-

ter. Call 426-4002 after 6 p.m., or

Fred Petsch, 475-8494. -22

WANT ADS

HOUSE FOR SALE by owner—4
bedroom ranch, family room, 2
baths, full basement, 3 years old
Ph. 475-1791. -14t

Pierson & Riemenschneider

CRAMPED FOR SPACE?—3,000
sq. ft., 6 bdrms. (or study or
sewing room), family room and
large recreation room, 3 1/2-car
attached garage, 1 mile from
Chelsea.

VILLAGE CHARM — 3 lovely re-
modeled 2-story, new kitchen, 3
bedroom, 1 1/2 baths, family room,
dining room, full basement. A real
bargain at \$88,500.

PERFECT for the young couple
who wants a little land in the
country. New home with all appli-
cances, carpet, 3 bedrooms, dining
el, lots of closets. All this on 1
acre. Chelsea schools. -21t

\$49,900 — Large yard, nice land-
scaping, large 4-bedroom home in
the village, family room, 2
baths, attached 2-car garage. Close
to elementary school.

LOTS OF ROOM TO ROOM — 8
acres. Home has 2 bedrooms,
plus room for a study, carpet, full
basement, first floor laundry and
2-car garage. Just west of Chelsea.
\$37,500.

RECENTLY REDUCED! Only
\$46,500 buys this 4-bedroom tri-
level, nicely decorated, family
room, dining room, large back
yard, 2-car attached garage. In the
village and close to elementary
school.

COMPLETELY FURNISHED —
Double wide mobile home, 3 bed-
rooms, over 1,500 sq. ft., 1 1/2 baths,
central air, intercom. Overlooks
Portage Lake.

LAND CONTRACT—Starter home
with lake access, 2 bedroom, full
basement and carpet, \$18,500.

ACREAGE

KILMER RD. — 16 acres, rolling,
\$11,000.

WATERLOO RD. — 2 acres, trees,
\$8,500.

MCKINLEY RD. — 2.71 acres,
wooded, \$15,000.

MUSBACH RD. — 10 acres, roll-
ing, terms \$15,900.

NOAH HEIGHTS — Four 1-acre
wooded parcels, \$8,900 and up.

LOWREY RD. — 5 acres, rolling,
terms \$9,800.

LINDLEY RD. — 2.26 acres, trees,
terms, \$13,000.

Pierson & Riemenschneider

Office: 475-9101

Eves. call:
Jeanene Riemenschneider

Pat Finkel 475-1469

John Pierson 475-1824

Bob Riemenschneider, 475-1469

22

DEER PROCESSING

Manchester Locker Plant

Manchester - Ph. 428-7600

Pickup Caps & Covers

For all makes and models. Stan-
dard and custom-designed. From
\$147.00. Free brochure. -22

PIONEER COACH
MANUFACTURING CO.

3496 Pontiac Trail
Ann Arbor, 668-6785

FOR SALE — 10 Bantam hens, \$3
for all. 475-7450. -x22

YES

WE ARE MAKING
LONG-TERM FARM
REAL ESTATE
LOANS

SEE US

Federal
LAND BANK
Association

P. O. Box 7006
Ph. 769-2411 3645 Jackson Rd.
Ann Arbor, Mich. 48103

WANT ADS

FOR RENT—Fair Service Center
for meetings, parties, wedding
receptions, etc. Weekdays or
week-ends. Contact John Wolnitz,
phone 475-1518. -x31t

Headquarters for

RED WING WORK SHOES

Foster's Men's Wear

40t

FOR SALE — Rabbit pens and

boxes. Drums, pipe, copper

tubing, 25 cents each; new 8.00x15

white wall tire, 5 bags 10-6-4 fertili-

zer, and various items. Phone 475-

2056. -x20t

GENERAL OFFICE WORK, part-

time, 5 days a week, downtown

Chelsea. Write Box NO-3, care of

Chelsea Standard, Chelsea. -21t

COMPLETELY REMODELED old-

er home in Village of Manches-

ter. Walk to schools and shopping.

Immaculate! \$32,900. Owner anx-

ious. -21t

DAYS - 475-6693

Evenings—

Steve Elliot 475-1423

Jean Tschirhart 475-2722

Jack Edington, Manager 428-2592

Evelyn White 475-7551

Aileen Zsenyuk 428-7824

Ted Picklesimer 475-8174

Joe O'Connor 994-1223

22

POWER

SNOW THROWERS

Simplicity

Ariens

4 to 7 h.p.

BARGAIN HUNTING?

LAST YEAR'S MODEL 13 h.p.

Simplicity tractor.

Used 8 h.p. Broadmoor Simplicity

tractor with 36" mower. Can be

fitted with snow blade or blower.

Used 6 h.p. Simplicity Yeoman

tractor with snow blade and 32"

mower. -22

CHAIN SAW SPECIAL—McCulloch

Mac 10-10A with chain brake,

16" bar, \$189.95. -x22

Chelsea Hardware

110 S. Main St. -22

Pre-Christmas Sale

The perfect "stocking stuffer"

hose with toes size 6 through 8 1/2

and 9 through 11.

Regularly \$3 pair

Now two pair for \$4.50.

Vogel's Store

10-FOOT ALUM. DUCK BOAT and

oars. Reasonable. \$50. 475-7450.

-x22

WATERLOO REALTY

355 Clear Lake

JOANN WARYWODA, BROKER

Phone 475-8674

Evenings:

Sue Lewie, 475-2377

Paul Erickson, 475-1748

x22t

FOR SALE — 1945 Allis-Chalmers

tractor model WC, nearly new

tires, very good condition. 1956

Ford 1-ton stake truck, runs well,

needs some work. 2, 16.5 Dodge

94-ton truck rims. Prices negoti-

able. Ph. 428-7814 anytime. -x22

5

WANT ADS

Fireplace Builder

Field stone mason, block and brick
mason, tuck pointing.
FREE ESTIMATES
Call 475-8025 after 3 p.m.

Patrick Grammatico

x40t

REAL ESTATE

4-BEDROOM HOME—All on one
level, kitchen, dining room, liv-
ing room, utility room. Oil forced
air heat. On one acre. Month
schools. \$17,500.

OLD TOWN HALL building in vil-
lage of Waterloo, includes lot,
\$5,000.

NEW 3-BEDROOM home on 5
acres, large fireplace, spacious
living room with window-wall over-
looking woods, full walk-out base-
ment, 2-car attached garage, 5
minutes to Chelsea.

ATTRACTIVE 2-bedroom with
lake access, new gas heating
system, new roof, newly deco-
rated. \$27,900.

14 ACRES, heavily wooded, Web-
ster township, 3 miles to US-23.
Dexter schools. \$13,500, 7 1/2% land
contract.

2.2 ACRES—Lyndon township, sur-
veyed and perc approved. Beauti-
ful rolling land. Area of nice homes.
Chelsea schools. \$8,500.

10 ACRES wooded, 546-foot road
frontage, 4" well on property, 15
min. to Chelsea. Waterloo town-
ship. \$15,000. Land contract terms
possible.

2-ACRE beautiful building site with
trees. Waterloo township. \$7,000.
Land contract terms possible.

10 ACRES with scenic view. Flow-
ing stream connects two lakes,
near state land. \$15,000, 7% land
contract.

LAKE-FRONT HOME with 2 bed-
rooms, 2 years old, fireplace,
deck overlooking lake, gas char-
grill, 2-car garage. Chelsea schools.

4-BEDROOM HOME on 1 acre.
Full basement, 2-car garage,
space for small business. Stock-
bridge schools. \$28,500.

WATERLOO REALTY

355 Clear Lake

JOANN WARYWODA, BROKER

Phone 475-8674

Evenings:

Sue Lewie, 475-2377

Paul Erickson, 475-1748

x22t

FOR SALE — 1945 Allis-Chalmers

tractor model WC, nearly new

tires, very good condition. 1956

Ford 1-ton stake truck, runs well,

needs some work. 2, 16.5 Dodge

94-ton truck rims. Prices negoti-

able. Ph. 428-7814 anytime. -x22

5

WANT ADS

- YOUNG -

We list and sell lake, country and town properties. Eugene Young, Real Estate & Builder, 678-3162, 1199 Dexter-Pinckney Rd., Pinckney 48169. x341f

CARPENTER WORK — Inside or out. Mr. Coburn, 475-2893. 121f

COMPLETE ALUMINUM SERVICE

Siding - Awnings - Repairs
Gutters - Storm Windows
Remodeling

Free Estimates

Call 475-9209

Camelot Construction
Chelsea, Mich. x121f

CUSTOM BUILDING

LICENSED & INSURED

FREE ESTIMATES

TOTAL CONSTRUCTION SERVICES

— Residential, commercial and industrial

— Garages

— Remodeling - Additions

— Aluminum Siding

— Roofing

— Trenching

SLOCUM CONTRACTORS & BUILDERS

Serving Washtenaw County
For Over 20 years
20700 OLD US-12
CHELSEA
Phone 475-8321 or 475-7611 21f

CUT FOOD COSTS

Grow your own fruit on Stark Bros. trees.

Reserve stock now for spring mail delivery.

Elson Bettner
15700 Cassidy Rd.
475-8223 151f

ATTIC INSULATION

Meets Federal specifications. 6" blown insulation has R-25-plus, compared to a R-19 for blanket insulation. Complete job costs compare with material cost of blanket insulation.

ARNIE RAE
Evenings (517) 851-8762
17836 M-36, Gregory x22

WANT ADS

FOR SALE — Indian cents, post-cards, books, foreign coins, Australian opals and other articles. Lawrence E. Gulman, 1571 Sugar Loaf Lake. Call 475-8917. 372f

WEDDING STATIONERY — Prospective brides are invited to see our complete line of invitations and accessories. The Chelsea Standard, Ph. 475-1371. 81f

GUTTERS

SEAMLESS aluminum eaves-troughs installed. White and brown. Call Wilson Metal Shop, Manchester, 428-8468. x81f

McCulloch Portable Generators Chain Saws

WE SELL SERVICE, SHARPEN AND TRADE

Chelsea Hardware

VACUUM CLEANERS

Authorized Electrolux sales and service.

James Cox
428-2931, or 428-8686
118 Riverside Dr., Manchester. 481f

FOR REAL DOLLAR SAVINGS be sure and see us before you buy any new or used car. Palmer Motor Sales, Inc. Your Ford Dealer for over 60 years. 21f

TRAILER SPACE FOR RENT in Chelsea, for medium or small size trailer. Village water and sewer, convenient location. Call 1-474-8552. x23

Complete Body Repair Service

Bumping - Painting
Windshield and Side Glass Replacement

Free Pick-up & Delivery
Open Monday Until 9

CONTACT DON KNOLL
FOR FREE ESTIMATE

Village Motor Sales, Inc.

IMPERIAL - CHRYSLER
DODGE - PLYMOUTH

Phone 475-8661
1185 Manchester Rd., Chelsea

Hours: 8 a.m. to 6 p.m.
Tues. thru Fri. Until 9 Monday

9 a.m. to 1 p.m. Saturday x141f

PERSONAL CARE AIDE for residents in Chelsea. Methodist Home. Part-time and afternoons to start. (Nine hours a week). Job will probably expand to at least half-time and perhaps full time later on. Maturity and experience with older persons preferred. Ph. Mrs. Moulton at 475-8633. x22

MOVING SALE — Chrome dinette set, Duncan Phyfe chairs, table and buffet. Misc. chairs. Baby equipment. Skis. Ph. 426-4169. x22

FOR SALE — Winchester Model 12, 20 gauge, 95 percent mint. Winchester 30-30 Buffalo Bill, new in box. Two Winchester Mod. 87 single shots, 1940, one mint, other good. Phone 475-7450. x22

FOR SALE — Seasoned fireplace wood. Ph. 475-1669. x22

WANT ADS

PIANO TUNING, Chelsea and area. Filing, reconditioning and rebuilding. Used piano and reconditioned grands and verticals. E. Ecklund, 426-1429. x502f

Once-A-Year Sale! New Cars & Trucks, Demos, Driver Ed Cars at Tremendous Savings!

DEMOS

First come, first served!

Stock No. 805—'75 Dodge D-100 pick-up, 318, auto., p.s., p.b., AM radio, 2-tone, Adventurer package, etc. Was \$5054.05. NOW \$3900

Stock No. 894—'75 Dodge Coronet Custom 4-dr. sedan, 360, auto., p.s., p.b., air cond., AM-FM, radials, 2-tone, etc. Was \$5837.80. NOW \$4785

Stock No. 926—'75 Dodge D-100 Club Cab, 133-in. wheelbase, 318, auto., p.s., p.b., AM-FM, speed control, radials, 2-tone, etc. Was \$5743.10. NOW \$4610

Stock No. 973—'75 Chrysler Newport 4-dr. sedan, 400 2-bbl., auto., p.s., p.b., air cond., AM-FM, speed control, radials, etc. Was \$6022.80. NOW \$4865

Stock No. 804—'75 Valiant Custom 4-dr., 225, auto., p.s., p.b., AM-FM, radials, rear defroster, etc. Was \$4423.45. NOW \$3760

Used Trucks

'75 CHEVY ¾-ton pick-up, 350, auto., p.s., p.b., AM-FM, low mileage. \$3995

'70 FORD ½-ton pick-up, 302 V-8, auto., p.s., p.b. \$1395

'72 CHEVY ¾-ton pick-up, 350, auto., p.s., p.b. \$1995

DEER HUNTER'S SPECIAL
'73 FORD ½-ton pick-up, 360 V-8, 3-speed, AM radio, 8-ft. Fleetwing Capover camper, with furnace, stove, etc. \$2695

NEW '75s

Stock No. 795—'75 Duster Custom Coupe, 225, auto., p.s., AM radio, Space Duster pkg., etc. Was \$4251.95. NOW \$3745

Stock No. 819—'75 Duster Custom Coupe, 225, auto., p.s., AM radio, white sidewalls, etc. Was \$3965.70. NOW \$3485

Stock No. 924—'75 Dodge D-100 pick-up, 318, auto., p.s., p.b., AM radio, Adventurer pkg., 2-tone, etc. Was \$5152.59. NOW \$4155

Stock No. 974—'75 Chrysler Newport 4-dr. sedan, 400 2-bbl., auto., p.s., p.b., air cond., AM-FM, speed control, radials, etc. Was \$5993.45. NOW \$4845

Also an excellent selection of new '75 Vans, Sportsman Wagons, Power Wagons, and Sno-Fitters at tremendous savings. Highest trade-ins. Bank financing arranged.

Quality Used Cars

'75 PLYMOUTH Gran Fury Custom 4-dr. hardtop, 318, auto., p.s., p.b., air cond., speed control, AM-FM, rear defogger. \$3995

'74 PLYMOUTH Fury 4-dr., V-8, auto., p.s., p.b., air cond. \$1595

'73 DODGE Coronet Custom 4-dr., 318, auto., p.s., p.b., air cond., rear defroster, 6,000 miles \$2695

'73 CHARGER SE, 318, auto., p.s., p.b., air cond., AM-FM, radials. \$3195

'72 COUGAR 2-dr. hardtop, 351, auto., p.s., p.b., air cond., AM-FM stereo. \$2195

'72 COLT coupe, 1600 cc., auto., very clean. \$1695

'72 VW Bus, good condition. \$1995

12-ft. MIDWEST flatbed truck body. \$250

9 1/2-ft. FLATBED truck body. \$225

'71 MERCURY Monterey station wagon, V-8, auto., p.s., p.b. \$995

'69 PLYMOUTH Sport Suburban wagon, V-8, auto., p.s., p.b., low mileage. \$795

'69 PLYMOUTH Fury III 4-dr., V-8, auto., p.s., rallye wheels. \$695

'68 PLYMOUTH station wagon, V-8, auto., p.s. \$395

'67 FORD station wagon, V-8, 3-speed. \$395

'67 FORD Econoline van, 6-cyl., auto., good condition. \$995

WANT ADS

SEAMLESS ALUMINUM eaves-troughs, roofing, siding, and carpentry work of all kinds. Experienced installers. All work guaranteed. For free estimate, call R. D. Kleinschmidt Co., 428-8836. x311f

KETO USED CARS

8020 GRAND - DEXTER

426-4535

CARS BOUGHT AND SOLD

MUNITH AUCTION—100 Main St., Munith, Mich. Auction every Sunday, 6 p.m. Danny Fleming, auctioneer. x121f

STOCKBRIDGE, 13 acres, commercial, on M-52. (517) 851-8144. 351f

D&G Allen Excavating

Septic Tanks and Drainfields
Back Hoe and Dozing

Sand, Gravel and Topsoil Hauled
Phone (517) 851-8396
or (517) 851-8278 431f

BRICK MASON — Brick work, block work, fireplaces, chimney repairs, homes and additions. Ph. 475-2584. x441f

WANTED—Interior-exterior painting, \$5.50 per hr. or by job. Guarantee all work. Ph. 971-5751. x501f

PAINTING—Exterior and interior. Quality workmanship, free estimates, references, reasonable rates. Ph. (517) 851-7055. x481f

CHILD CARE available during the day. By day or week. Facilities for any age child. Ph. 475-8353. x101f

AMAZING "Grapefruit Pill" with Diadex plus more convenient than grapefruit. Eat satisfying meals and lose weight. Chelsea Pharmacy. x24

LICENSED BABYSITTER for one or two pre-school children, in my home. Ph. 475-2916. 22

SEE US for transit mixed concrete. Klump Bros. Gravel Co. Phone Chelsea 475-5530, 4920 Loveland Rd., Grass Lake, Mich. x401f

TRAVEL TRAILERS — 13-ft. and up; 10x55 ft. trailers. John R. Jones Trailer Sales, Gregory, Mich. Phone 488-2655. 431f

ELECTRICAL WIRING of all types New and rewiring. Ph. 426-4855. x201f

CHELSEA—3-bedroom Ranch, 2 baths, sunken living room, family room with bar; located on Howard Rd. \$49,900. For an appointment call 475-7643. 511f

WILL DO BABYSITTING in my home. Any age. Please call 475-8391. 161f

MARSHALL REALTY

(313)

878-3182

440 Dexter Rd., Pinckney, MI 48169

3-BEDROOM two-story home with gas heat. Take over 8% land contract with payments of \$120 per month, plus taxes.

NICE HOME with 12 acres and 3-bedroom, 1 1/2 baths, 3 sliding door walls, walk-out basement, 2-car garage. Reduced in price. Pinckney area.

NICE 3-ACRE PARCEL close to state land, priced to sell, on land contract.

Marshall Realty

440 Dexter Road
Pinckney, Mich.
878-3182 22

Buy Antiques For Christmas

SCHAULES ANTIQUES

Furniture, Glass, China, Primitives
and misc. Also appraising.

Call or by chance, 475-7362

14450 Island Lake Rd., Chelsea x22

FOR RENT — 3-bedroom unfurnished apt. except for stove and refrigerator. Fully carpeted except for utility room. Pay own electricity. \$225 per month. \$200 deposit. Reference required. Ph. 426-8356. 221f

IN THE AIR FORCE, good people are promoted, not laid-off. Jobs available in police, electronics, mechanics and clerical. Men-women, ages 17-28, no experience necessary. Call your Air Force Representative, at 973-1830. 29

FREE KITTENS — Litter trained. Ph. 475-8510. 211f

CARPENTERING REMODELING

ALUMINUM SIDING - KITCHENS
PATIOS - GARAGES
PHONE 475-7474

CHARLES ROMINE

Licensed Contractor
18027 Old US-12
Chelsea

PIERSON & SONS

LICENSED GENERAL CONTRACTORS
475-8750

New Construction,
Remodeling, Siding.

WANT ADS

NEED A ROOF? Call Toth Building & Remodeling, (313) 499-2172. 411f

CAR & TRUCK LEASING. For details see Lyle Chriswell at Palmer Motor Sales, 475-1301. 491f

BUILDERS—House and barn roofing, all types of roof repair. Aluminum storm windows and doors, aluminum siding and gutters, awnings, porch enclosures, garage and room additions, cement work. Call Joe Hayes for free estimates, Manchester 428-8520. x161f

Old Orchard Furniture Refinishing

ANTIQUES RESTORED

Old finish removed from wood or metal safely and economically.

513 Old Orchard
Stockbridge, Michigan 49285
(517) 851-8713 101f

ANN ARBOR — THE ANTIQUES MARKET. "Your Invitation to Christmas Antiques Shopping." Sunday, Nov. 16, 5055 Saline-Ann Arbor Rd., Exit 173 off I-94, 180 dealers, everything guaranteed for quality and authenticity. FEATURING: Many beautiful items saved a year for this special Christmas show incl. decorations, toys, dolls, furniture, cards. Also featuring: A-2 EARLY LIGHTING & IRON: A-12 DOLLS incl. Closed mouth Steiner, Heubach colored baby, brown eyed china, many small unusual bisque incl. 4" Bye-Lo: A-15 PA. settle bench (6 ft), orig. grain; step down bent back WINDSOR; HEPPLEWHITE blanket chest; PA pine bench orig. grain; childrens & doll furniture: A-18 Amer. & Eng. PEWTER SPATTERWARE: Rowback WINDSORS 7 & 9 spindle; Pa. Pine hutch table in old blue; Birch & maple QUEEN ANNS drop leaf table, 48", cherry HEPPLEWHITE candlestand: A-19 PATTERN GLASS incl. over 20 pcs Cupid & Venus: F-2 over 100 W.W.I. posters, B-33 schoolmasters desk in pine, maple one-piece kitchen cupboard, cherry corner cupboard, cherry drop leaf table. 8-5 (Come early). x22

JOE DUNVILLE STABLES — Riding lessons, horses boarded, and horses trained. Open barn Nov. 16, 1-5 p.m. 6330 Daly Rd., Dexter. Ph. 426-8431. x22

FOR SALE — 2 luxury motor homes, 32' Landau Regency and 29' Landau Continental. Ph. 426-8431 or 475-2154. x22

INSIDE YARD SALE — Antiques, furniture, glassware, clothes, kitchen items, baskets, plates, trunks, misc. North Territorial, 2 houses south of Inverness Tavern. 12 to 5 p.m. Friday, Saturday, Sunday. x22

FREE to good home, very special start-Siamese, litter-trained kittens. Ph. 475-2600. x22

At least your carpets can be dry. Dry clean them with HOST Rent the HOST Machine. Merkel Home Furnishing, Chelsea. 475-8621. x22

HUNTING DOGS for sale — \$15. Irish Setter-Labrador mix, good blood lines. Ph. 475-9373. 22

WANT ADS

FOR SALE—Tenor sax, Buscher Aristocrat, like new. Best offer. Ph. 475-8661. 131f

BLACK SWAMP DIK by the ton or yard, and backhoe work. Drain fields, basements dug. Drive ways. Ph. 475-1963. x241f

FOR RENT — American Legion Hall, \$50. Call 475-1824. 401f

A fine selection of New and Used Cars

for immediate delivery

Harper Pontiac

Sales & Service

475-1306

Evenings, 475-1608 401f

Automotive Rust Proofing Cars and Trucks

Village Motor Sales, Inc.

IMPERIAL - CHRYSLER
DODGE - PLYMOUTH

Phone 475-8661

1185 Manchester Rd., Chelsea

Hours: 8 a.m. to 6 p.m.
Tues. thru Fri. Until 9 Monday

9 a.m. to 1 p.m. Saturday 211f

Order Your Name Imprinted CHRISTMAS CARDS

Now and Save!

10% Off
on all orders placed
before Dec. 1, 1975

Wide selection.
Prices to fit
any budget.

The Chelsea Standard
300 N. Main
Phone 475-1371 24

ROOMS FOR RENT — \$80 month. Utilities included. Kitchen privileges. Small damage deposit required. Come to 3433 Edison, Dexter, for more details ask for Jo Ann ONLY. x23

FOR RENT — 1- and 2-bedroom apartments at D. E. Limpert Co., Manchester. Ph. Cathy at 428-8328 between 9 a.m. and 11 a.m. x23

WANT ADS

OES RUMMAGE SALE Nov. 13-14, 9 a.m. to 5 p.m. at the Masonic Temple. For pick-up call 475-1141 or 475-1803 or 475-2705. 22

WANTED TO RENT — Responsible couple desires house or large downstairs apartment to rent in Chelsea area. Ph. (313) 475-8968 or 428-8705. 22

CERAMIC TILE — Reasonable prices. Excellent work. Ph. 428-2260. x241f

BABYSITTER NEEDED in my home 3 to 5 days a week, 6 a.m. until noon. Ph. 475-1556. x22

WANT ADS

FOR SALE — 1936 Mercury Monterey. Very good mechanical condition. Needs body work, rear fenders. \$250 cash. 428-3791. x22

FOR RENT to MAY 1, 1976—Beautiful 2-bedroom home on Half-Moon Lake, \$250 per mo. References required. Day 475-8881, eves 475-2718. x23

WANTED — A job to care for an elderly gentleman or lady in their home. Ph. 475-1144. 23

FOR SALE — One exercise bike, \$25; Colliers Encyclopedias (20 vols), \$50. Ph. 475-7489. 23



TODAY'S THOUGHT

By LOUIS BURGHARDT

"Cheer up, things could be worse!" How true the words are! And sometimes when one does cheer up, things do get worse! On those occasions it really takes an optimist to see things through, especially when situations and times are tough. It is easy to acquire a cynical attitude, disbelief and fatalistic outlook. And so pessimism is born.

It should be realized pessimism usually reflects inaction. Waiting. Doing little if anything to change a situation or make things better. Should it not also be realized that waiting and inaction NEVER accomplish a thing? Should it not be realized that an optimist must be active, not passive?

Harry Truman once said, "I have never seen pessimists make anything work or contribute anything of lasting value. It takes optimists to make the world work, because eventually some of their ideas are put into practice to help mankind." In today's language can it not be said, "He said a mouthful?"

BURGHARDT FUNERAL HOME, 214 East Middle St., Chelsea, Mich. Phone 475-1551.

SPECIALS

16-OZ. BOTTLES

Coca-Cola . . . 8 pac 95c (plus deposit)

8-OZ. BANQUET BEEF, TURKEY, CHICKEN

Meat Pies . . . 2 for 43c

10-OZ. PKG. ECKRICH

Smok-y-Links . . . 83c



BOWLING NEWS



Seven Point Mixed

Standings as of Nov. 4

	W	L
The Foxes	46	24
Hi Hopes	45	25
Elliott & Sons	44	26
ZAP	41	29
College Dodge	39	31
Strike Outs	35	35
Flat Tires	35	35
Dexter Gear	32	38
Bowling Wizards	28	42
7M's Bar	27	43
River Rats	24	46
Alley Runners	24	46
Men, 450 series and over: R. Fox, 549; G. Beeman, 603; M. Fox, 488; M. Spence, 501; O. Inbody, 456; F. Palacios, 456; J. Fortner, 590; A. Hansen, 494.		
Men, 160 games and over: A. Hansen, 178, 217; J. Fortner, 225, 204, 161; F. Palacios, 177; F. Steers, 183; O. Inbody, 183; R. Fox, 232; M. Fox, 170, 178; G. Beeman, 221, 182, 200; M. Spence, 166, 180.		
Women, 425 series and over: C. Powell, 498; M. Inbody, 476; D. Beuerle, 454; S. Howell, 435; C. Klapperich, 447; D. Detting, 454; B. Carpenter, 454; D. Hansen, 459; J. Orbring, 430.		
Women, 150 games and over: J. Orbring, 150, 153; V. Elliott, 179; J. Elliott, 174; A. Eder, 154; D. Hansen, 169; B. Carpenter, 162, 162; C. Fox, 152; D. Detting, 167, 151; P. Scherdt, 162; V. Guenther, 167, 178, 151; C. Klapperich, 161; S. Howell, 167; G. Harris, 161; D. Beuerle, 157, 162; M. Inbody, 151, 177; M. Paul, 160; C. Powell, 157, 185.		

Chelsea Suburban

Standings as of Nov. 6

	W	L
Anderson Electric	27	13
Ann Arbor Hyd.	24	16
Dean's Team	24	16
Mark IV Lounge	22	18
Double A No. 99	19	21
Skips Team	18	22
Dana P.T.O.	16	24
Double A No. 2	12	28
High single game: D. Cumper, 241; R. Lentz, 217; D. Collins, 217.		
High single series: S. Hopkins, 628; D. Collins, 591; P. Lentz, 577.		
High team game: Anderson Electric, 935; Mark IV Lounge, 887; Perfection Sewing Service, 855.		

Nite Owl League

Standings as of Nov. 10

	W	L
Hanco Sports Center	47	23
Steele's Heating & Cooling	46	24
McCalla Feeds	44	26
Chelsea Finance	44	26
Southern Boy Take-Out	44	26
Associated Spring	40	30
Bollinger's Sanitation	39	31
Wahl's Oil	38	32
Mich. Kitchen & Bathroom	37	33
Norm's Body Shop	37	33
VFW 4078	34	36
Cavanaugh Lake store	31	39
Ted's Standard	31	39
Belser's Construction	26	44
LithoCrafters No. 2	26	44
LithoCrafters No. 1	24	46
LithoCrafters No. 3	23	47
Team No. 3	15	55
200 games and over: A. Peterson, 223; T. Steele, 212, 224; T. Crispin, 203; R. Nix, 235; D. Wutke, 226; J. Bauer, 216; F. Petsch, 215; H. McCalla, 213; W. Bohne, 204; J. Crawford, 213.		
500 series and over: T. Crispin, 532; G. Koda, 509; P. Brown, 520; D. Scott, 521; J. Hughes, 532; R. Nix, 500; D. Buku, 515; G. Ahrens, 505; T. Schulze, 555; J. Stoffer, 500; A. Peterson, 500; A. Kuhl, 524; J. Bauer, 515; F. Petsch, 555; H. McCalla, 535; J. Borders, 528; R. Snyder, 508; J. Crawford, 515.		
600 series and over: T. Steele, 617.		

Chelsea Lanes Mixed

Standings as of Nov. 7

	W	L
Buckeye Transplants	43	20
Countryside Builders	41	22
DJ's	40	23
Mark IV Lounge	38	25
Adamson & Henson	37	26
U No's	37	26
The Hopetula	36	27
Torric & Rawson	35	28
Floyd's Gang	34	29
Doug's Painting	34	29
Bollinger's	30	33
The Fox's	30	33
Federal Screw Outlaws	29	34
Ann Arbor Centerless	27	36
Harmon & Cook	23	40
Hook, Line & Stinkers	21	42
Rushing's Temp. Help	18	45
Women, 150 games and over: J. Norris, 188, 186; H. Scripser, 150; K. Steinway, 189; J. Thibault, 151; L. Alexander, 154, 158; M. McGuire, 163; M. Vavas, 160; E. McGilver, 175; D. Keizer, 163; D. Sannes, 166, 154; R. Dils, 162; D. Alexander, 157; B. Smith, 152; M. Henson, 152; M. Adamson, 150; K. Barksdale, 151.		
Women, 450 series and over: J. Norris, 523; L. Alexander, 456; D. Sannes, 535; B. Smith, 452.		
Men, 175 games and over: D. Williams, 190; F. Thibault, 178; D. Ellenwood, 198; D. Alexander, 181, 185; R. Johnson, 187; E. Vavas, 228, 197; A. Sannes, 176, 178; F. Northrop, 192, 148; L. Bell, 180; F. Roderick, 189; D. Messner, 179, 198.		
Men, 500 series and over: D. Alexander, 521; R. Johnson, 501; E. Vavas, 590; F. Northrop, 601; D. Messner, 621.		

Chelsea Women's Bowling Club

Standings as of Nov. 5

	W	L
Parish's Cleaners	34	10
Chelsea Milling	32	12
Thompson's Pizza	31	13
Washtenaw Engineering	31	13
Jiffy Mixes	30	14
Palmer Ford	30	14
Lloyd Bridges Chevrolet	26	18
Wolverine Bar	25	19
Chelsea Grinding	24	20
Mark IV	22	22
Amway	22	22
Norris Electric	22	22
Larry's Roadside Market	21 1/2	26 1/2
Klink Excavating	19	29
Norm's Barber Shop	17	31
Rushing's Temp. Help	15	33
Joe & Judy's	14	34
Glenn's Mobil	12 1/2	35 1/2
450 series and over: N. Packard, 580; C. Bradbury, 519; P. Poertner, 510; J. Hafner, 506; B. Fritz, 499; D. Verwey, 495; A. Fahrner, 489; N. Kern, 479; J. Schleede, 479; A. Alexander, 471; L. Behnke, 471; E. Whitaker, 467; P. Fitzsimmons, 466; J. Norris, 459; J. Stoll, 457; D. Cozzens, 455; D. Alber, 452.		
150 games and over: N. Packard, 223, 188; C. Bradbury, 178, 160, 172; P. Poertner, 167, 176, 167; J. Hafner, 186, 173; B. Fritz, 152, 179, 188; D. Verwey, 212; A. Fahrner, 172, 168; N. Kern, 189; J. Schleede, 189, 172; A. Alexander, 180, 160, 151; L. Behnke, 185, 183; E. Whitaker, 189; P. Fitzsimmons, 153, 177; J. Norris, 159, 151; J. Stoll, 155, 154; D. Cozzens, 170, 150; D. Alber, 163, 158; S. Zink, 154; B. Bridges, 157; J. Reinhart, 160; C. Parsons, 156; D. McCalla, 174, S. McCalla, 161; B. Armstrong, 193; D. Norris, 153; P. Norris, 154; R. Whitaker, 133; S. Robards, 155, 169; B. Fike, 161; L. Fouty, 164; B. Bush, 178; J. Rowe, 153, 151; B. McGibney, 160; M. Eder, 152; S. Ringe, 151; L. Niles, 163; D. Fouty, 171; S. Klink, 180; S. Settle, 152; A. Elsele, 177; P. Wurster, 160; A. Knickerbocker, 152.		

Chelsea Suburban

Standings as of Nov. 5

	W	L
Waterloo Garage	55	22
Chelsea Assoc. Builders	50	27
Chelsea Drug	47	30
State Farm	43	34
Dancer's	42	35
Cavanaugh Lake Store	39	39
Mark IV Lounge	38	40
Dairy Queen	35	43
Frisinger Realty	34	44
Fletcher Mobil	33	45
Dana Dee Lites	31	53
Chelsea State Bank	25	62
150 games and over: C. Stoffer, 201; S. Bowen, 187; Stewart, 181; G. Baczynski, 186; J. Schulze, 151; B. Beeman, 175; D. Vargo, 189; E. Miller, 172, 163; A. Fahrner, 185; N. Collins, 158, 173; W. Harner, 188; M. Usher, 161, 184, 174; B. Hafley, 157; B. McGibney, 182, 168, 135; R. West, 157, 157; R. McGibney, 158, 163, 154; M. Inbody, 177; K. Chapman, 164; V. Weber, 173; J. Huston, 170, 161; N. Packard, 190, 174; D. McAllister, 170, 174; D. Keizer, 156; J. Buku, 169, 177, 158; C. Tryand, 160; T. Monroe, 193, 152, 161; A. Wood, 156; A. Hocking, 158; C. Peterson, 167; M. DeLaTorre, 187, 176.		
425 series and over: M. DeLaTorre, 465; N. Packard, 503; D. McAllister, 478; J. Buku, 504; T. Monroe, 506; B. McGibney, 503; R. West, 459; R. McGibney, 475; M. Inbody, 457; K. Chapman, 434; J. Huston, 472; E. Miller, 446; M. Usher, 519; N. Collins, 481; C. Stoffer, 478; S. Bowen, 454; V. Stewart, 460; G. Baczynski, 473.		

Charlie Brown & Snoopy's Friends

Peanut League

Standings as of Nov. 8

	W	L
Super Stars	16	5
Bulldogs	14	7
Bowling Green	12	9
Super Strikers	9	12
Pin Wheels	7	14
Snoopies	5	16
Games 70 and over: K. Nadeau, 84, 97; D. Collins, 85; H. Morrell, 90, 122; P. Fletcher, 104, 85; S. Cheever, 84, 88; J. Morgan, 98, 82; D. Settle, 165, 145; D. Thompson, 72; J. Schaefer, 95; C. Bollinger, 71, 77; J. Tobin, 79, 75; D. Detting, 119, 108.		
Series 100 and over: K. Nadeau, 181; D. Collins, 124; H. Morrell, 212; P. Fletcher, 189; S. Cheever, 172; J. Morgan, 180; D. Settle, 310; B. Fouty, 109; C. Schulze, 111; S. Lorenzen, 120; B. Robinson, 128; D. Thompson, 140; J. Schaefer, 148; C. Bollinger, 148; K. Fletcher, 128; J. Tobin, 154; D. Detting, 228; L. Kaiser, 109.		

Rolling Pin League

Standings as of Nov. 11

	W	L
Pots	27	13
Moppper Uppers	23	17
Jelly Rollers	23	17
Sporadic Spatulas	22	18
Egg Beaters	22	18
Grinders	22	18
Kitchen Kapers	21	19
Sugar Bowls	21	19
Kookie Kutters	21	19
Mixers	20	20
Blenders	20	20
Spooners	19	21
Poachers	19	21
Dish Rags	18	22
Jolly Mops	17	23
Beaters	15 1/2	24 1/2
Coffee Cups	15	25
Brooms	10 1/2	29 1/2

Peppermint Patties

Peanut League

Standings as of Nov. 8

	W	L
Blue Streaks	15	6
Team No. 3	12	9
Red Barons	8	13
Super Stars	7	14
Games 70 and over: T. Loucks, 76, 94; D. Rowe, 90, 96; R. Loucks, 78; M. White, 97; T. Mindykowski, 78; T. Harook, 80.		
Series 100 and over: T. Loucks, 170; D. Waldyke, 109; D. Rowe, 188; T. Nagel, 102; R. Loucks, 132; M. White, 141; T. Mindykowski, 136; T. Harook, 108.		

186; M. Eeles, 150; E. Williams, 184; R. Dils, 173; A. Rivard, 196; M. Cox, 152; E. Raynolds, 177; E. Neibauer, 184, 167; R. Bable, 172; D. Bable, 152, 183; D. Klink, 172, 151; B. Marsh, 160, 171; E. Whitaker, 204; J. Myers, 157; E. Gibb, 152; D. Neuman, 150; D. Anderson, 154; C. Shepherd, 155, 169; D. Farrington, 161; R. Foster, 150; J. Shepherd, 151, 160; F. Ferry, 154; P. Borders, 166; D. Dirian, 175; N. Hohn, 168, 183; T. Doll, 159; M. Vavas, 188; G. Duhamel, 158; L. Keizer, 150; P. Harook, 165, 200.

Senior House League

Standings as of Nov. 10

	W	L
Mark IV Lounge	52 1/2	17 1/2
S.J. Custom Leather	48	22
Gambles	48	22
Dana's Top Five	40	30
Luke's Sporting Goods	39 1/2	30 1/2
Schneider's Grocery	39	31
Sylvan Center	39	31
Village Books	39	31
Chelsea Lumber	38	34
Frank Grohs Chevrolet	34	38
Sarns, Inc.	31	39
Washtenaw Crop Service	30	40
IPSCO	30	40
Bauer Builders	29	41
Walt's Barber Shop	28	42
Dexter Automatics	24	46
Village Motor Sales	23	47
Seitz's Tavern	20	50

600 series: R. Kiel, 640; J. Harook, 613.

525 and over series: R. Celske, 545; R. Kren, 547; O. Cavender, 550; L. Salyer, 560; J. Fortner, 538; R. Faron, 525; C. Fore, 568; W. Sisco, 558; J. Collins, 525; M. Poertner, 572; N. Fahrner, 539; L. Bauer, 588; F. Austin, 536; W. Westphal, 529; J. Toma, 556; B. McGibney, 551; L. Sanderson, 578; G. Lawrence, 539; R. Maurer, 538; A. Sannes, 571; G. Beeman, 550.

210 and over games: R. Kern, 226; C. Fara, 225; R. Kiel, 218, 215; L. Bauer, 246; R. Eismann, 211; L. Sanderson, 210; G. Beeman, 224.

Tri-City Mixed

Standings as of Nov. 7

	W	L
Fletcher & Baker	46	24
Frealin Craft & Co.	43	27
The Proud Americans	40	30
Stivers	40	30
3-D Sales & Service	39	31
M & M	39	31
Smith's Service	38	32
Burnitt & Sparks	37	33
E. P. Smith Pallet Co.	35	35
Chelsea Cleaners	34	36
Portage Hardware	32	38
Dexter's Union 76	32	38
R. E. Restaurant	30	40
Real Estate One	30	40
Bable & Bable	29	41
Mel's Roofing	29	41
V.F.S.	29	41
McEwan & Mock	27	43

500 series, men: J. Baker, 63; G. Burnett, 23; H. Burnett, 38; S. Cavender, 69; P. Fletcher, 678; J. Lyerla, 67; A. Peterson, 15; D. Scott, 525; M. Smith, 518; D. Westcott, 541.

200 games, men: S. Cavender, 225; P. Fletcher, 203, 244, 231; D. Scott, 208; M. Smith, 200; D. Westcott, 205.

450 series, women: M. Ashmore, 487; J. Brieger, 460; B. Fike, 453; J. Harms, 482; C. Hodges, 509; M. Westcott, 454.

150 games, women: M. Ashmore, 164, 159, 164; V. Bable, 156; C. Baker, 154; K. Barksdale, 151, 130; J. Brieger, 164, 184; J. Burnett, 151; N. Cavender, 156; G. Detting, 155, 154; B. Fike, 151, 158; J. Harms, 165, 159; C. Hodges, 155, 232; M. Maier, 165; B. Parish, 160; C. Stoffer, 172; D. Watkins, 152; M. Westcott, 185.

Junior House

Standings as of Nov. 6

	W	L
Mac Tools	58	26
Jim Bradley Pontiac	54	30
Smith's Service	52	32
Chelsea Lanes	49	35
Washtenaw Engineering	49	35
Boyer Automotive	48	36
Slocum Construction	47	37
Dana Maintenance	46	38
Mark IV Lounge	45	39
Dana Demons	45	39
3-D Sales & Service	42	42
Ypsi Asphalt Paving	41	43
Delf's Paints	36	48
Rockwell International	33	51
Wolverine Bar	31	53
Team No. 1	31	53
Bush Cookies	25	59
Ann Arbor Kirby	24	60

Leisure Time League

Standings as of Nov. 6

	W	L
Rug Rats	27	13
Unpredictables	25	15
Sugar Loafers	23	17
Mifits	21	19
Four Stooges	20 1/2	19 1/2
Highly Hopefuls	20	20
The Lakers	19 1/2	20 1/2



CHEERING THE CHAMPS: CHS varsity football cheerleaders are, bottom row, from left, Sue Leach, Liz Haselschwardt, Kathy Treado and Sue Frisbie. In the center, from the top down, Michelle Blanchard, Judy Powers and Teresa Ottoman. The girls were coached all season long by Mrs. Arlene Bareis. Nothing like a wife helping her husband out!



BULLDOG JUNIOR VARSITY CHEERLEADERS: Helping JV coach Jon Schaffner and his team along this season were junior varsity football cheerleaders, bottom, from left, Debbie Campbell, Cathy Villemure and Sue German. Top from left, Carrie Lane, Anna Crawford and Cindy Bareis. Kneeling, Jullene Tucker.

Conference Round-Up...

(Continued from page seven)
nents scoreless in the first quarter of play.
Brighton's only score came on a first half field goal by Dan Phillon.
It was a third quarter interception by Bart Lyon that set up Pinckney's first touchdown. Rick Winslo, Pirate fullback went 60 yards in eight plays. The score came when Roger White swept left 13 yards into the end zone. The pass for the two point conversion was incomplete.
With 2:33 left in the game, White scored the second touchdown on an 11-yard run. Dale Wilson ran for the two-point conversion.

Saline 16, Blissfield 0—
The Hornets pulled out of a scoreless first quarter to shut out their Blissfield opponents and mark up a 5-4 season for themselves last Friday evening.
Both touchdowns came from running back Rick Stemm. Stemm ran for touchdowns of 1 and 62 yards. He scored his first touchdown in the second quarter and Gene Robinson added a two-point conversion for a half-time lead of 8-0. His second score was marked up in the third quarter. Mike Squire passed to Pat Steiner to wrap up the game on the conversion.

Milan 45, Dundee 0—
It all happened in the fourth quarter of play for the Big Reds Friday evening, despite the fact that they held a 14-0 lead over their opponents at half-time. The win gave them a 6-3 finish for the season.

First half scores came on a two-yard run by Fred Peterson. Another TD came when Mike Love tallied a one yarder and Peterson ran for a two-point conversion.

Peterson again ran for a two-point conversion in the third quarter following a two-yard TD by Al Tellas. The Big Reds were set for a spectacular finish.

Al Hood tallied on a 48-yarder and Tellas got another three yarder as Love and Peterson ran for conversions. Following Steve King's 50-yard interception return, Bob Stevens kicked his 13th of 14 extra points this season.

Erie Mason 32, Lincoln 7—
It was pretty much the work of one player, LeRoy LaPlante, who led the scoring last Friday evening with four touchdowns. LaPlante ran 185 yards in the game, alone and finished the season for his team with 1,008 yards to his name and 11 touchdowns.

The four touchdowns LaPlante put in lights during this game came on runs of five, one, one and 32 yards.

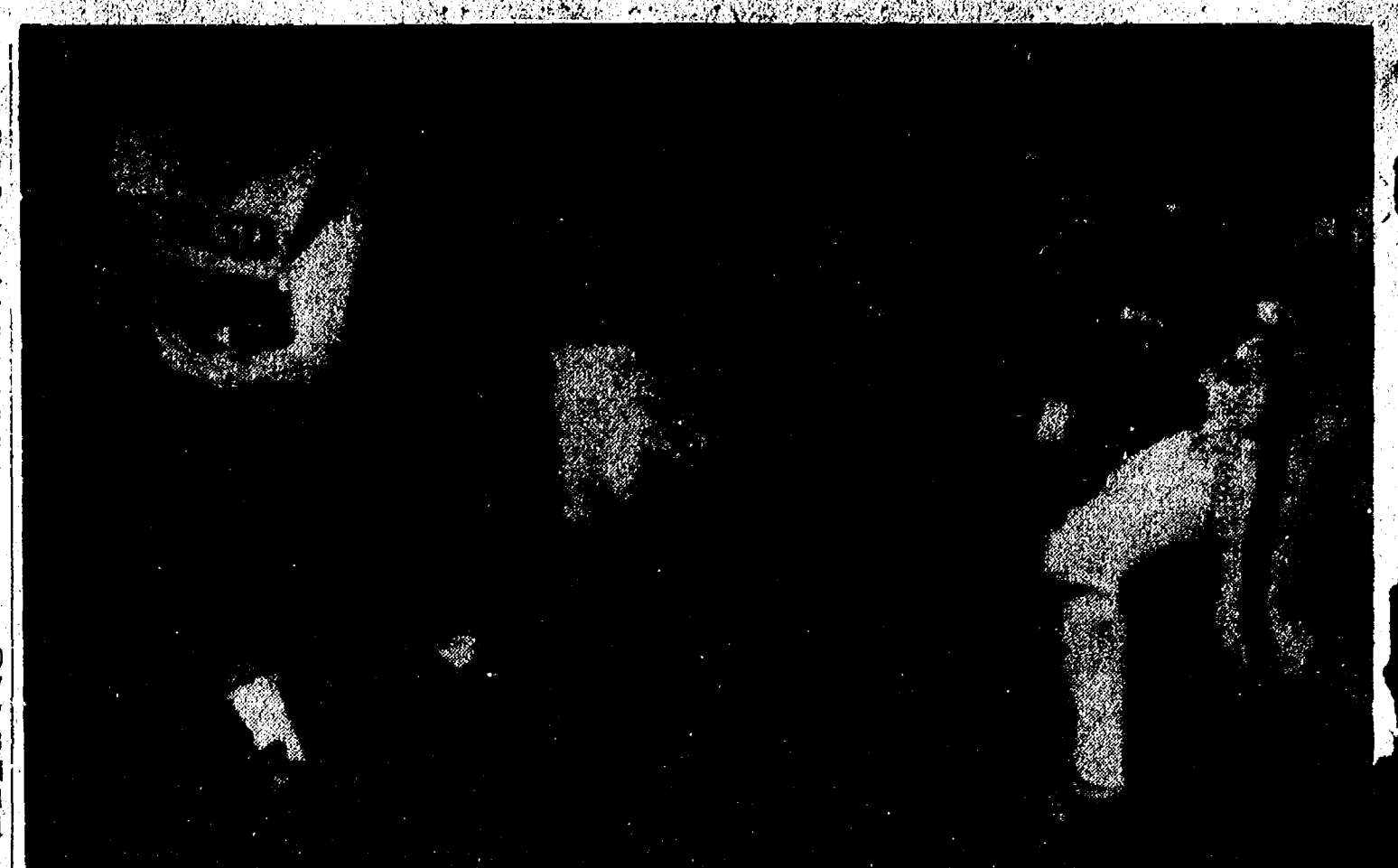
Bill Glatf scored the second touchdown for Erie-Mason on a pass from Mike Denbo covering eight yards.

A 12-yard pass from George Czinski to Jim Smith scored the single touchdown for the Railsplitters.

Chelsea 21, Jackson Northwest 14—
Two conference champions battled it out last Friday evening. The result was a perfect season for the Chelsea Bulldogs who were able to save a victory for themselves on a one-yard run in the fourth period by Tony Robards. Other Chelsea scorers were Tim Reed who rambled 13 yards into the end zone during the first quarter and a 43-yard run by Howard Salyer which knotted the score at 14-14 in the second quarter. The two Mountie touchdowns also came in the second quarter of play.

	SOUTHEASTERN	
	SEC	ALL
	W L Pct	W L Pct
Chelsea	7 0 1.000	9 0 1.000
Lincoln	6 1 .857	6 3 .687
Milan	4 3 .571	6 3 .687
Saline	3 4 .429	5 4 .556
Brighton	3 4 .429	4 5 .444
Novi	3 4 .429	4 5 .444
Dexter	1 6 .143	1 8 .111
South Lyon	1 6 .143	1 8 .111

SCORES
Chelsea 21, Jackson Northwest 14
Erie Mason 32, Lincoln 7
Milan 45, Dundee 0
Michigan Center 28, Dexter 8
Pinckney 14, Brighton 3
Saline 16, Blissfield 0
Northville 20, South Lyon 0
Novi 20, Carleton Airport 15

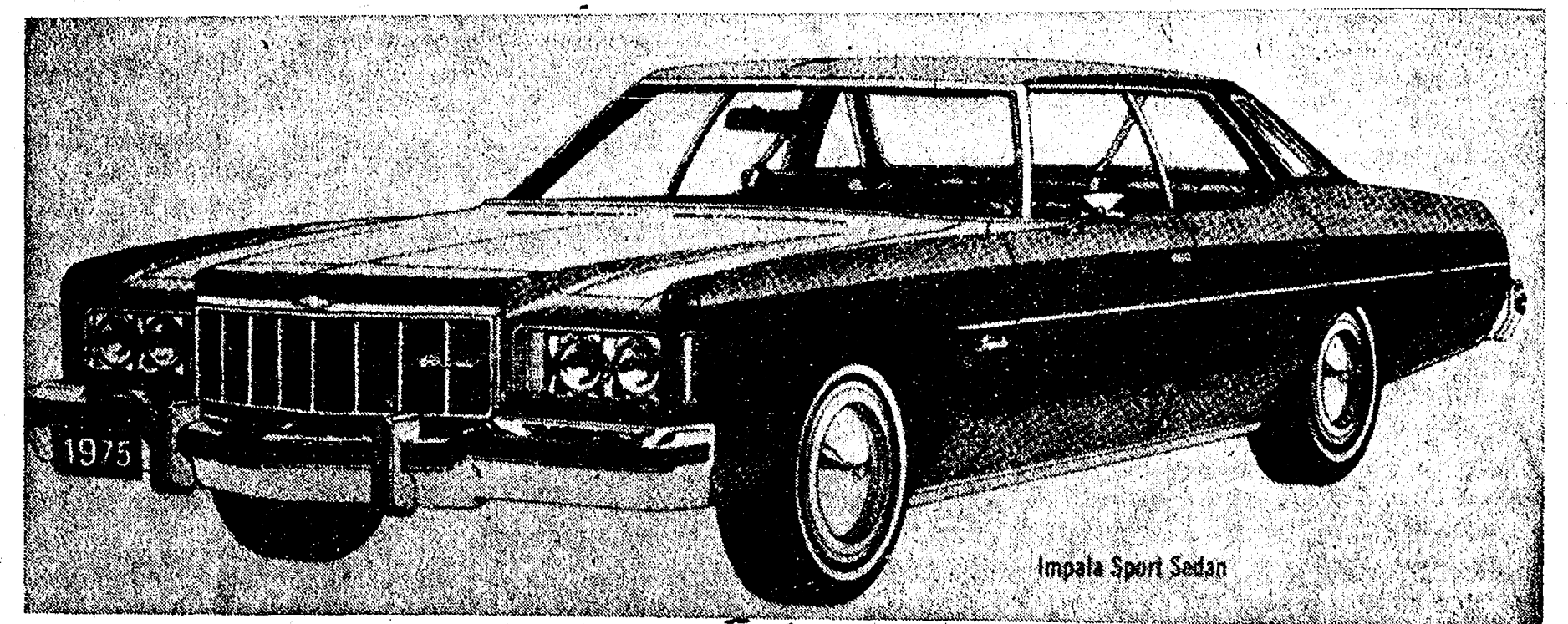


SWEEP LEFT: Senior halfback Tim Reed (45) sweeps left here for 13 yards. According to his coach, Phil Barles, Reed made the saving play of the game in the last quarter with only seconds remaining on the clock. It was Reed's tackle of Jackson Northwest quarterback that wrapped up the victory for the Bulldogs last Friday night.

A Standard Want Ad Gets Results!

LOOK

At These Once-A-Year CLOSE-OUT SPECIALS!



1975 IMPALA 4-DOOR SPORT SEDAN

We have 6 Impala and Caprice sedans in stock to choose from. These are 1975 demonstrators with full factory warranty

PRICED FROM **\$4128⁰⁰**

These cars are fully equipped, including factory air conditioning, vinyl top, Hydramatic transmission, power steering, power brakes and many other extras.

ALSO: We have 5 New 1975 Impalas in stock at BIG SAVINGS. Shop early for best selection!

LLOYD BRIDGES

Chevrolet CHEVROLET TRUCKS

"For Quality, Service and Price"

SALES HOURS:

Monday 8 a.m. to 8:30 p.m.
Tuesday thru Friday 8 a.m. to 6:00 p.m.
Saturday 8 a.m. to 5:00 p.m.

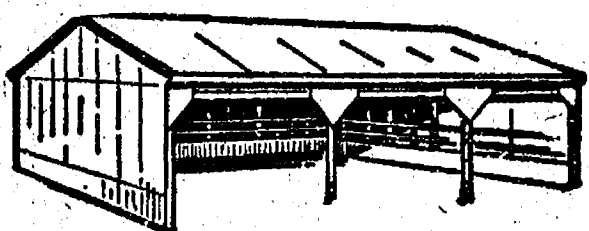
475-1373
CHELSEA

Advertise Your Auction in The Standard!

POLE BUILDINGS

(GO UP EASILY...ECONOMICALLY)

ANY TYPE - ANY STYLE - ANY SIZE
Residential - Agriculture - Commercial
PROMPT CONSTRUCTION DATES
Low prices and high quality workmanship.



OWEN CUSTOM BUILDERS
LICENSED & INSURED - MANY SATISFIED CUSTOMERS
JACKSON (517) 769-2669

SCHOOL LUNCH MENU!

Week of Nov. 17-21

Monday—Savory beef over biscuits, buttered wax beans, bread and butter, chilled fruit and milk.

Tuesday—Saucy franks on hamburger buns, baked beans, chips, ginger bread with topping and milk.

Wednesday—Pizza pie, buttered vegetable, orange juice, 1/2 peanut butter sandwich, fruit pie and milk.

Thursday—Vegetable and meat pie, poka dot salad, bread and butter, snow and gold salad, cookie and milk.

Friday—Tacos with trimmings, bean soup, crackers, apple crisp and milk.

If you wonder what it is like to go through life with an unalleviated hearing loss, hearing specialists suggest a simple experiment. Watch a favorite television program with the sound turned low to hear. The experiment probably will be interesting for a short time, but is likely to become irritating as you discover you are cut off from communication.

Letters to the Editor

To the Editor:
I find it necessary to respond to a letter by Virginia Albrecht which appeared in the Oct. 30 edition of The Standard and which implied that the National Rifle Association advised its membership to boycott the United Fund. This simply is not true!

I am a member of the National Rifle Association and I make an annual pledge to the United Fund. I can say with certainty that the National Rifle Association did not in any way exert any influence on its membership to boycott the United Fund. The NRA holds CBS and the producers of "The Guns of Autumn" responsible for the contents of that documentary, not the United Fund.

You will have to find someone short of your goal. The NRA is simply not responsible.
Donald G. Passow, Jr.

To the Editor:
It was recently brought to my attention that Congressman Jerry Petis introduced House Con. Res. 28 on Jan. 14, 1975 calling for a Constitutional Convention to be held on or before July 4, 1978.

All patriotic citizens should be emphatically opposed to calling a Constitutional Convention at the present time. It would be most unwise to alter, abolish or replace the substance or form of our present constitution under the leadership of an unelected president, vice-president and a secretary of state whose loyalty to the United States of America is questionable.
Ray Coulter.

School teachers and parents of young children are urged to help guard youngsters against hearing losses that can result from severe head colds. Hearing specialists point out that children can be particularly susceptible to head colds during winter months.

FARLEY

CONSTRUCTION
522 HOWARD RD.

ADDITIONS - REMODELING
CONCRETE WORK
REPAIRS

475-8265 or 475-7643

GOING OUT OF BUSINESS SALE

Complete sporting goods store inventory being sold, at below cost. Stock valued at \$30,000.

- Including -

HOCKEY EQUIPMENT

★ 400 HOCKEY STICKS
Koho - Torpso
Winnwell Custom - Koho Gorlie

★ SHOULDER PADS
Koho - Wilson - Winnwell

★ SHIN GUARDS
Koho - Wilson

★ GOALIE EQUIPMENT

★ GLOVES

TENNIS

BASKETBALL

BASEBALL

GOLF

SHOES - All Sizes

HANDBALL

LUKE'S SPORTING GOODS
137 Park St., Chelsea Phone 475-1435



Polly's

MASTER
MARKETS

1101 M52
CHELSEA

201 PARK
VANDERCOOK L.K.

1621
Spring Arbor Rd.
JACKSON

960
N. WEST AVE.
JACKSON

115
W. PROSPECT ST.
JACKSON

1809
E. MICH. AVE.
JACKSON

Supplement to Ann Arbor News, Chelsea Standard

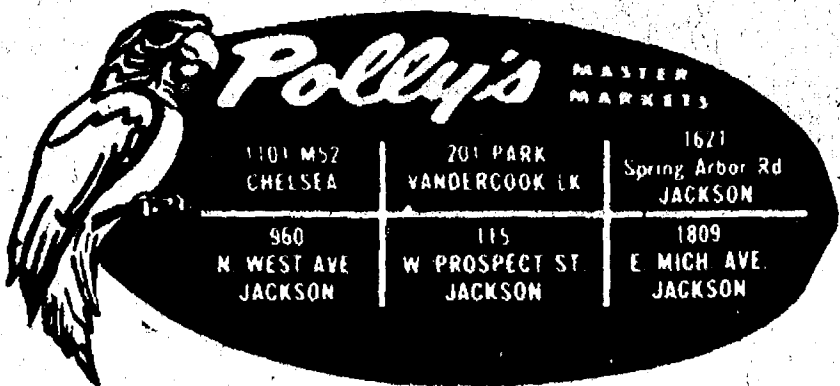
get to know us...

WE CAN HELP YOU SAVE ON YOUR FOOD BILL!

OPEN .
DAILY: **8** A.M. TO **10** P.M.

OPEN
SUNDAY: **9** A.M. TO **6** P.M.

- ★ **QUALITY PRODUCE**
- ★ **QUALITY MEAT**
- ★ **COLD BEER & WINE**
- ★ **LOTTERY TICKETS**
- ★ **SIDES OF BEEF**
- ★ **FRUIT BASKETS**
- ★ **DRY CLEANING**
- ★ **PHOTO PROCESSING**
- ★ **VARIETY AT LOW PRICES**



IT'S TIME FOR YOU TO REAP LARGE DISCOUNT SAVINGS BY HARVESTING OUR CROP AT POLLY'S! OUR STORE IS BULGING AT THE SEAMS WITH PRODUCE, DAIRY, MEAT, SEAFOOD AND GROCERY ITEMS - ALL AT LOW PRICES!

THE TIME IS NOW..

TO ORDER YOUR TURKEY OR FRUIT BASKETS FOR YOUR SPECIAL HOLIDAY NEEDS. WHETHER YOUR NEED IS ONE OR ONE HUNDRED, PLACE YOUR ORDER NOW & GUARANTEE YOURSELF EXACTLY WHAT YOU DESIRE.

SCOT LAD	APPLESAUCE..... 4	16-oz.	\$1
SCOT LAD	BUTTER BEANS... 5	16-oz.	\$1
SCOT LAD	RED BEANS..... 3	16-oz.	69¢
SCOT LAD RED	KIDNEY BEANS ... 4	16-oz.	\$1
SCOT LAD	POTATOES..... 3	16-oz.	69¢
SCOT LAD SOLID PAK	TOMATOES.....	16-oz.	29¢
SCOT LAD	PORK N' BEANS 5	16-oz.	\$1

\$5.95	CASE
\$4.79	CASE
\$5.39	CASE
\$5.79	CASE
\$5.39	CASE
\$6.79	CASE
\$4.69	CASE

**SAVE!
SAVE!
SAVE!**

SAVE 3 WAYS ON OUR SCOT LAD CAN SALE. 1.) YOU ALWAYS SAVE WHEN YOU BUY PRIVATE LABEL BRANDS 2.) YOU SAVE ON POLLY'S FEATURE ITEM PRICES 3.) YOU SAVE EVEN MORE WHEN YOU BUY BY THE CASE.

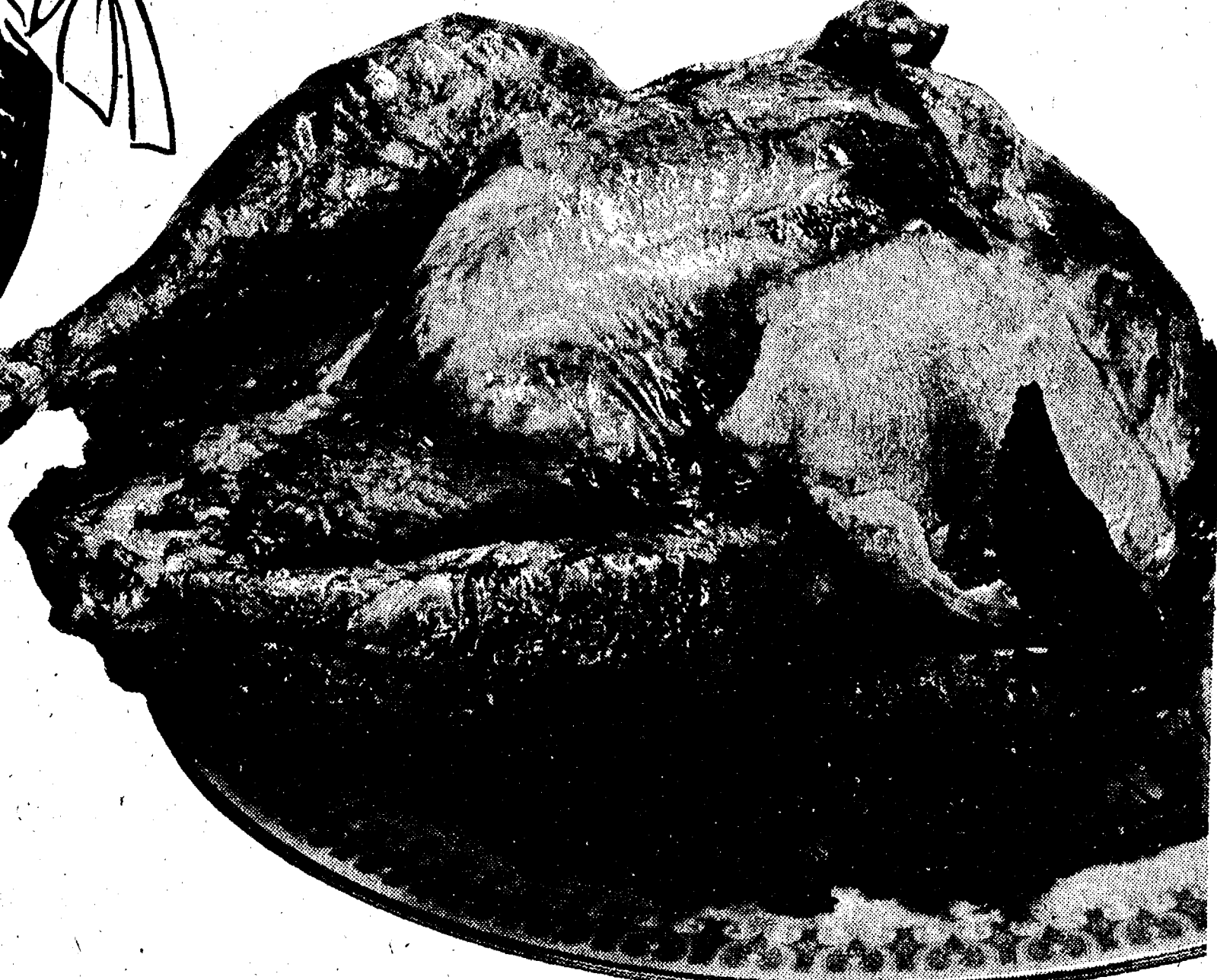
SCOT LAD INSTANT	ORANGE DRINK
SCOT LAD	APPLE JUICE
SCOT LAD	GRAPE JUICE
SCOT LAD	TOMATO SAUCE
SCOT LAD	CHILI w/BEANS
SCOT LAD	SPAGHETTI & ME
SCOT LAD	MEAT RAVIOLI
SCOT LAD	PEANUT BUTTER

HARVEST OF VALUES

GOVERNMENT INSPECTED WHOLE

FRYERS LB. 49¢

CUT-UP FRYERS LB. 55¢



GOLD CREST TURKEY 59¢ LB.
18 LBS. and UP

SWIFT BUTTERBALL TURKEY 69¢ LB.
18 LBS. & UP

THE BEST YOUR MONEY CAN BUY

ARMOUR STAR CANNED HAM	3-LB.	\$5.99
FARMER PEET BABY BONANZA HAM	LB.	\$1.99
FARMER PEET SLICED BACON	12-OZ.	\$1.49
SHENADOAH "BREAST" TURKEY ROAST	2-LB.	\$3.39
SHENADOAH "BREAST & THIGH" TURKEY ROAST	2-LB.	\$3.29
HERRUD RING BOLOGNA	LB.	\$1.09
HERRUD BEEF EATER FRANKS	LB.	\$1.19
HERRUD FAMILY PAK	20-OZ.	\$1.49
ECKRICH SMORGAS PAK	LB.	\$1.49
HERRUD SKINLESS FRANKS	2-LB.	\$2.09
FRESH TURBOT FILLETS	LB.	89¢
FRESH OCEAN CATFISH FILLETS	LB.	\$1.39

ALL ABOUT FOOD



F.A. KENNEDY

Most people believe the "forbidden fruit" in the Garden of Eden was an apple. But the Koran says it was a banana.

Well, that wasn't the only question anybody ever had about bananas. For one thing, it just isn't "necessarily so" that you should "never put bananas in your refrigerator"...as history's most famous advertising jingle warned us back in the mid-fifties. A few days in a refrigerator helps prevent over-ripening.

And bananas don't grow on banana trees. A banana plant is just that...a plant. It's a gigantic herb, in fact. These plants grow 25 feet in height and look like trees. But they aren't trees, for they have no woody trunks and no boughs.

And although bananas are one of the oldest foods on earth, they didn't really catch on here in America until about a century ago, and then it was practically by accident.

It seems that one Lorenzo D. Baker, captain of the schooner Telegraph out of Boston, was unable to pick up any "worthwhile" cargo on a stop in Jamaica. Rather than come back empty handed, he loaded his decks with bananas.

Well, that first "banana boat" really started something. Bananas were an instant sensation in Boston. They were a big hit at the Philadelphia Centennial Exposition of 1876, selling for ten cents each, individually wrapped in tinfoil. And they are still going strong today. In fact, we Americans eat more bananas today than any other fruit...actually about eighteen pounds per year for every man, woman and child in the nation!

In closing, I'm going to take liberties with an old song by saying "Yes, Polly's has bananas." And I'm sure you'll like 'em...a whole bunch!

GOLDEN RIPE BANANAS 15¢ LB.



Mix or Match

- Cucumbers
- Green Onions
- Green Peppers

3 for 39¢

UP TO 32%
SAVE WITH IN-STORE COUPON
REDDI-WHIP TOPPING 49¢
7-OZ. AEROSOL CAN

TROPIC FRESH PINEAPPLES

EA. 69¢

FLORIDA TANGERINES

176 SIZE DOZ. 59¢

OYSTERS

10-OZ. CAN \$1.29

FARMER PEET Baby BONANZA HAM

LB. \$1.99

POLLY PRIDE QUALITY GROUND CHUCK

LB. 89¢

POLLY PRIDE QUALITY BEEF CUBE STEAK

LB. \$1.39

27-oz. \$1.19
32-oz. 39¢
40-oz. 79¢
8-oz. 15¢
15-oz. 44¢
15-oz. 39¢
15-oz. 39¢
2-LB. \$1.09



SAVE UP TO 40¢ WITH IN-STORE COUPON
POLLY'S GRADE A
LARGE EGGS ... DOZEN
59¢
BIRDSEYE
COOL WHIP 9-OZ.
59¢
RETURNABLE
8-PAK COKE
TAB or SPRITE 16-OZ.
95¢ plus deposit

SAVE 30¢ WITH IN-STORE COUPON
FLOUR \$1.19
10-LB.



KRAFT PHILADELPHIA
CREAM CHEESE
8-OZ. PKGS. 2 **89¢**

SAVE 11¢...BISQUICK
BISCUIT MIX 40-OZ. **88¢**
SAVE 20¢...REYNOLDS HEAVY DUTY
ALUMINUM FOIL 18"x25' **49¢**
SAVE 32¢...LIPTON SOUP
CHICKEN NOODLE 2-PAK **3 for \$1**
SAVE 14¢
HANDI-WRAP 100-FT. **29¢**
SAVE 38¢...VOORTMAN'S
DUTCH COOKIES 2 for **\$1**

ECKRICH
"Thin Sliced"
MEATS
Beef • Chicken • Corn Beef • Turkey
2 3-OZ. PKG. **89¢**

NEW!!
LIPTON
MAKE-A-BETTER BURGER
4 FLAVORS
2 3/4-OZ. **39¢**



FALL PANTRY FILLING SALE

DEL MONTE TOMATO CATSUP 3 14-OZ. \$1	DEL MONTE CUT GREEN BEANS 4 16-OZ. 99¢
DEL MONTE TOMATO JUICE 2 46-OZ. 89¢	DEL MONTE FRENCH BEANS 4 16-OZ. 99¢
DEL MONTE PUMPKIN 2 29-OZ. 69¢	DEL MONTE ITALIAN BEANS 3 16-OZ. 99¢
DEL MONTE PEARS SLICED or HALVES 2 16-OZ. 79¢	DEL MONTE ELBERTA PEACHES 2 16-OZ. 79¢
DEL MONTE APRICOT HALVES 16-OZ. 43¢	DEL MONTE FRUIT COCKTAIL 29-OZ. 53¢
DEL MONTE W. K. CORN 16-OZ. 28¢	DEL MONTE CREAM CORN 16-OZ. 28¢

BANQUET
POT PIES 4 8-OZ. **98¢**
GREEN GIANT
PEAS w/BUTTER 3 10-OZ. **98¢**
GREEN GIANT NIBLET
CORN w/BUTTER 3 10-OZ. **98¢**
AUNT JEMIMA BUTTERMILK
WAFFLES 3 10-OZ. **98¢**
ORE-IDA
HASH BROWNS 2-LB. **49¢**

SAVE 29¢ WITH IN-STORE COUPON
DAIRY FRESH
MARGARINE
3 1-LB. QTRS. **\$1**

SEALTEST
Light n' Lively
YOGURT
4 8-OZ. **\$1**

PORK CHOPS LB. **\$1.23**
Ends & Centers

MEATY
RIBS
29¢
POLLY PRIDE QUALITY RIB-CUT PORK CHOPS LB. \$1.69
POLLY PRIDE QUALITY STUFFED PORK CHOPS LB. \$1.59

from
ECKRICH
\$1.59 PKG.

SAVE UP TO 38¢ WITH IN-STORE COUPON
MINUTE MAID
ORANGE JUICE
3 6-OZ. **79¢**

SAVE UP TO 58¢ WITH IN-STORE COUPON
NORTH STAR
ICE MILK or FUDGE BARS
2 6-PAK **89¢**

HOLSUM
BUTTER TOP BREAD 2 20-OZ. LOAVES **99¢**
BAYS
ENGLISH MUFFINS 3 6-PKS **\$1**

SAVE 30¢ WITH IN-STORE COUPON
KRAFT MIDGET
COLBY LONGHORN
12-OZ. **99¢**

SAVE 14¢ WITH IN-STORE COUPON
SUNMAID
RAISINS
15-OZ. **69¢**

SAVE 10¢ WITH IN-STORE COUPON
BORDO
PITTED DATES
16-OZ. **69¢**

HUNTERS! CHECK LIST

Coffee	Tobacco	Hunting Pants,
Pop	Bread	Coat & Cap
Beer	Snacks	Wool Shirts - Wool Sox
Liquor	Sterno	Sweat Shirt - Underwear
Playing cards	License & Holder	Rain Parka
Eggs	Ammunition	Sleeping Bag
Cereal	Gun Case	Red Hankies
Bacon	Hatchet	Suspenders
Lunchmeat	Hunting Knife	Waterproof Seat
Steaks	Flashlight & Batteries	Extra Laces
Ham	Lantern & Fuel	Gun Cleaning Equipment
Milk	Extra Mantles	Hand Warmers & Hand
Ice	Compass	Warmer Fluid
Sausage	Whistle	Matches & Match Box
Charcoal	Gloves & Mittens	Maps
Cigarettes	Insulated Boots	

Thank You

FOR SHOPPING AT...



**WHERE WE ARE
HAPPY TO.....**

save YOU MONEY!